

Area thrifts in trouble
see below

Bellevillite returns
from the Middle East
see photo page 2

BHS wrestlers finish
2nd at districts
see page 9

Belleville Times

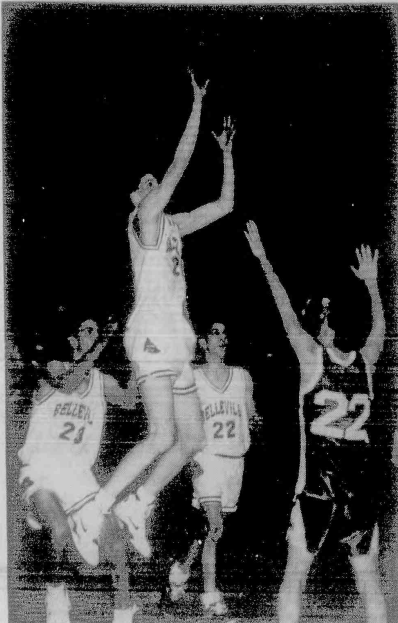
Serving Belleville Since 1909

35¢

82nd Year No.11

An Orechio Publication

Thursday, February 28, 1991



BELLEVILLE HOOPSTER...Troy Talmadge goes airborne for two points during last Saturday's game with Morris Hills. Helping out on the play are No. 23 Dennis DeWork and No. 22 Sal Strafaca. Check the sports section for more on how the Bucs won the game 70-66. (photo by Michele Suchome)

Local thrifts among state's weakest

By Alfred Cook

As of Sept. 30, the end of the third quarter 1990, New Jersey thrifts lost more than \$54 million while on the national level the figure rose to \$631 million, or more than double the losses suffered in the second quarter, according to the Office of Thrift Supervision, the federal agency that regulates savings and loans.

Nor was that news lost on customers as \$7 billion more was withdrawn in October than was deposited.

Most of that, some \$4.6 billion, was drained from 2,379 institutions still based at the end of October while some \$2.4 billion came from 203 government controlled institutions.

Locally, after the shocks of the savings and loan crisis resound in two township institutions, the Nutley Savings Bank, headquartered here, and the Howard Savings Bank, with a branch office on Franklin Avenue adjacent to the Nutley SLA.

One local institution, the Valley National Bancorp., is listed as among the strongest banks.

Thomas Infusino, chairman of Wakefern Inc., is on that bank's board of directors.

In a major financial article published Sunday Feb. 24, the Bergen Record listed both as among the eleven weakest thrifts in New Jersey.

The Nutley Savings Bank was listed as having a tangible capital ratio of +4.38 percent with a problem asset ratio of 0.769 percent, meaning it falls below federal regulation capital standards, "which require tangible capital equal to 1.5 percent of assets," while having at the same time a serious problem asset situation.

While not nearly so bad off as the Nutley thrift, the Howard Savings Bank also has problems. Since it is a bank, as opposed to a thrift, its capital requirements are labeled differently, though the meaning is essentially the same.

Thus, The Howard has a primary capital ratio of 6.902 percent with a problem asset ratio of 12.182 percent.

John V. Kelly, the president and director of the Nutley institution could not be reached for comment, but Michael K. Shaughnessy, the executive vice-president said, "we are attempting to have the bank recapitalized. We are working toward finding another banker to take over."

"But we cannot tell you we will not be taken over by the Resolution Trust Corp."

A major problem for the local bank is that as of the end of the third quarter, any institution seeking to acquire it would have to front-end almost \$15 million just to meet the Core capital requirements of 3 percent of capital assets.

'Bellevillites only'

BOE ousts 25 non-residents

By Mike Lazorchak

Non-resident students attending Belleville schools is not a new problem, but Belleville officials are finding new ways to alleviate the problem. Superintendent of schools Michael Nardiello said 25 non-resident students have already been removed from Belleville schools this year, and more are expected.

A typical scenario, according to Nardiello, is parents will claim a Belleville address to allow their child to attend a Belleville school. "It's a problem a lot of towns suffer, but we're working to put a stop to it," Nardiello said.

The average cost per pupil in Belleville is \$5,505 and as of January the enrollment was 3,599.

Four students, two from the high school and two from the middle school, were transferred as recent as last week.

"We remove them the day we

discover they are not residents of Belleville," the superintendent said. Belleville maintains a stringent policy of checking new students to the school system, but some will slip through the cracks, Nardiello said.

The first step is to check all new kindergarten students, with emphasis on those who do not have siblings already in the school system. Principals get to know the families in their district, Nardiello said, and an unusual name easily sticks out.

Belleville also employs a full-time attendance officer, Wayne Worley, who will actually go to the address to see if it is where the student lives.

However, Nardiello said, most cases come at the secondary level.

"He will be at the house as early as 7:30 a.m. to see if the student leaves the building, especially on Mondays, because they will usually

go home on weekends," Nardiello said. According to the superintendent, most reports of non-resident students come from parents.

"I will receive an anonymous call saying so-and-so is being dropped off everyday or is getting off the bus everyday at this stop," Nardiello said.

The attendance officer will also inform landlords of rental units when a student claims to be living with a relative. This way, Nardiello said, people might not want to take the risk of housing non-residents because it could cost them extra rent.

At the board of education meeting Feb. 25, member Joseph DelGuercio proposed the idea of offering a reward to people who identify non-resident students. He cited the overall savings of the cost of educating a student as opposed to the cost of a reward to support the idea.

In these cases the students need court affidavits to attend school. The affidavit stipulates three conditions that must be adhered to:

- The relative must claim the student as a dependent on their 1040 tax form.

- The relative may not receive any financial support from the parent.

- The student must live at the address seven days a week.

Worley will go to a house to check if there is a bedroom for the child and will even check closets to see if there are clothes appropriate for a child, Nardiello said.

"He will be at the house as early as 7:30 a.m. to see if the student leaves the building, especially on Mondays, because they will usually

Health dept. offers AIDS education

By Mike Lazorchak

The emergence of AIDS, Acquired Immune Deficiency Syndrome, in the 1980s dramatically raised interest in public health. The state responded with legislation in 1990 requiring municipalities to provide an AIDS education program.

According to health officer Thomas Longo, Belleville began providing an education program in 1989 in response to public demand. Without an AIDS education program, Belleville would stand to lose its Public Health Grant. Although the grant, which totaled \$16,000 this year, requires an AIDS program, its use is not restricted for that purpose.

Current statistics released by the state show Essex County has the highest number of AIDS cases, 3,245 in New Jersey.

Belleville has 45 cases and 36 known deaths as of Dec. 31.

"As the AIDS problem became more and more significant we developed the program," Longo said.

Educational sessions are presented to community groups, schools and church organizations by health educator Mary Springer.

"We try to educate all bodies of the community," Longo said.

Springer's presentation covers four basic areas:

- Statistical background.
- Public health significance.
- Risk reduction.
- Mode of transmission.

"The main thing we try to do is allay the fears of the people," Springer said.

The biggest fear, according to Springer, is the mode of transmission. People are misled by information of transmittal out of fear and ignorance.

According to Springer, the HIV virus, the virus that causes AIDS, is fragile and does not survive well outside the body.

People think it can be transmitted by drinking from the same glass, but Springer is quick to point out



HEALTH OFFICER...Thomas Longo looks over reports in his office at 383 Washington Ave.

(continued on page 12)

Changes proposed for AT program

The Belleville Board of Education may soon make changes to the admission requirements to the academically talented program.

The board listened to a proposal during the Feb. 25 meeting from Camille De Jannet, who chaired a committee formed in October, to revise the program.

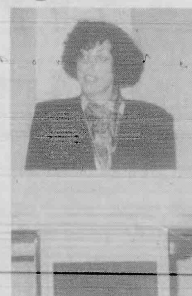
According to assistant superintendent of schools Michael Lally, the committee was created to investigate the admissions requirements for the grade three Saturday program, the grades four and five programs and the exiting program.

The committee proposed three criteria to be considered for admission into the academically talented program.

A student must score in the 95th percentile on the Iowa Test of Basic Skills. Previously, students needed to score in the 85th percentile.

Students must also attain a score of 112 or higher on the Cognitive Abilities Test in two of the three areas tested.

The third criteria would be a teacher evaluation form. De Jannet thought this comprehensive evaluation by a teacher would be beneficial for the student. The previous



Camille De Jannet

form was a simple question of whether or not the student should be admitted to the program.

"This criteria is consistent with other programs throughout Essex County," De Jannet said to conclude her presentation.

The board commended the work of the committee on the proposal and will consider it for the next meeting.

Narcotics squad nails three in cocaine bust

A Belleville man and Philadelphia woman were arrested earlier this month on charges they purchased cocaine from an alleged dealer from Harrison, who was also apprehended the same night, police said.

Sgt. Joseph Rotunda told the Belleville Times that as part of an ongoing investigation, he and fellow police narcotics squad members James DeGrosso and Nicholas Krenz set up surveillance of a building on Washington Avenue.

At 7:52 p.m. Feb. 14 the officers saw the subjects of the probe leaving the building, heading for an apparent drug transaction, Rotunda said.

Suspects police identified as Robert Brew, 42, of Belleville and Lorraine Doran, no age given, of Philadelphia were subsequently charged with possession of seven grams of cocaine and intent to distribute a controlled dangerous substance.

Rotunda estimated the street value of the drug at \$900.

He said further investigation led police to Juan Delapente, no age given, of Harrison. Delapente was apprehended following execution of a search warrant later the same night.

Delapente is accused of selling the pair seven grams of cocaine in a supermarket parking lot in Lyndhurst, Rotunda said.

He said Delapente was found in possession of three-quarters of an ounce of cocaine and was charged with possession with intent to distribute the drug.

The suspect was similarly charged in Lyndhurst and Harrison, the sergeant said.

Brew was released on \$2,500 bond, and Doran was released on her own recognizance, according to police reports.

Delapente was released on \$2,000 cash bail.

The case will be heard in Belleville Municipal Court March 27.

Free subscriptions for service members

For the duration of the war in the Persian Gulf, Orechio Publications will send complimentary Belleville Times subscriptions to personnel in American armed forces overseas.

If you have an immediate family member in Operation Desert Storm, please forward his or her address to: Orechio Publications, 800 Bloomfield Ave., Nutley 07110.

Nancy E. Zweil joins Peoples' Bank

S. Thomas Aitken, chairman of Peoples Bank, N.A. in Fairfield, has announced that Nancy E. Zweil has joined the bank as assistant cashier and branch manager at Peoples' Main Office in Belleville.

Zweil comes to Peoples Bank from Anchor Savings Bank, where she was most recently an assistant treasurer and branch manager. Before this, she held branch manager positions at six Anchor locations, including a tenure of 12 years at that bank's Nutley office.

Zweil earned a Bachelor of Arts degree from William Paterson College. She serves on the boards of directors of the Nutley Chamber of Commerce, where she is also a vice president, the Hillside Manor Condominium Association and the Belleville Chamber of Commerce. She is also a member of the Ridgefield Manufacturers' Association and the Warren Point Presbyterian Church in Fair Lawn. She and her husband George, have resided in Nutley for 17 years.

Pvt. Lowman graduates

Army National Guard Pvt. Sharonda T. Lowman has graduated from the subsistence supply specialist course at Fort Lee, Petersburg, Va.

Subsistence supplies. Also included in the training were ration breakdown, and commissary functions such as price changes, inventory, displays, and security.

She is the daughter of Catherine D. Lowman of Belleville.

The private is a 1988 graduate of Vailsburg High School, Newark.



HOME SWEET HOME...from left, Bloomfield councilman Gary Jacobacci, Sr. Alrman Robert Buccino and Jewish War Veteran Howard R. Rubla. Buccino is a lifelong Belleville resident, son of Charles and Rosemarie Buccino, who returned from the Persian Gulf. He spoke at a rally in Bloomfield before being shipped to Georgia to await further orders.

Mazzuca breakfast March 10

The committee to re-elect Ralph B. Mazzuca as a Board of Educa-

tion Trustee will sponsor a Campaign Breakfast to be held 9:30-12:00 March 10, at the Chandelior on Franklin Avenue in Belleville. For information call Joyce Mazzuca 759-1717.

Tax Time Shouldn't Be This Taxing

That's why it's our goal to make your life easier by taking all that trouble off your hands.

Paul Goldman, CPA

- Personal Income Taxes
- Self-Employed's Welcome
- Tax Planning
- New Businesses
- Corporate Taxes
- Estate Accounting

Take advantage of our experience. Call for Appointment.

759-7791

The Only Insurance Agency You'll Ever Need

- Auto • Trucks • Motorcycles • Boats
- Home • Tenant • Life
- Health • Business Policies
- Construction Packages

Member Belleville Chamber of Commerce

TROISE INSURANCE AGENCY

1772 Washington Avenue, Belleville

759-4100

Member N.A. Insurance Co. of N.Y.



WAITING AT HOME — Two little girls at Sandy Lane Nursery School have a real stake in what's going on in the world today. Brittany Rankins, left, has a daddy serving in the Persian Gulf while Joelle Pizzi's mommy and daddy are both in Saudi Arabia. All the students at the school made Valentine messages to send to the soldiers to let them know "We care."

Patriotic walk planned

A patriotic walk is scheduled for 1 p.m. March 3 at the Belleville High School parking lot and continuing to the Veterans Monument on Union Avenue.

The march was organized by councilman Mario Dronz and Belleville Middle School teacher Jim Risoli to allow Belleville youth to show support for the troops in the

Persian Gulf.

Karen Sibilla, a guitarist, will perform patriotic songs during a short ceremony at the monument.

Dignitaries of all levels have been invited to participate.

Dronz and Risoli also request family members of men and women serving in the war to contact them at 751-2277 or 751-2744.

Township of Belleville 1991 furniture pickup schedule

The following items will be picked up on your regular scheduled garbage pick-up days one week per month: Furniture, televisions, sofas, chairs, bedding (mattress and box springs), and nonmetal items. The Municipal Garbage Scavenger Contractor will be responsible for collection during the weeks listed below.

March 11, 1991	August 12, 1991
April 15, 1991	September 9, 1991
May 13, 1991	October 14, 1991
June 10, 1991	November 11, 1991
July 8, 1991	December 9, 1991

Plaza Bootery

Quality Shoe & Handbag Repairs

MOST WORK DONE WHILE YOU WAIT

483 Franklin Ave., Nutley

667-8964

Freddy's DELI & MEATS CATERING

311-313 UNION AVE. BELLEVILLE

759-3509

Open 7 Days a Week FREE DELIVERY

Lean Domestic Boiled Ham	\$2.99 lb.
Extra Large Eggs	99¢ a doz.
Home Baked Turkey Breast	\$3.99 1/2 lb.
Slicing Provolone	\$1.69 1/2 lb.
Hormel Slicing Pepperoni	\$2.89 lb.
Fresh Fillet of Flounder	\$5.89 lb.
Lean Stew Beef	\$2.49 lb.
Fresh Fish for Lent	* Fresh Shrimp * Fillet of Flounder * Cleaned Calamari
Hormel DiLusso Salami	\$3.19 1/2 lb.
Pecorino Romano Grated Cheese	\$3.89 lb.
Italian Style Veal Cutlet	\$5.69 lb.
Purdue Chicken Cutlets	\$3.69 lb.

FAMILY MEAT PLANS AVAILABLE

WE ACCEPT FOOD STAMPS

1991 COOL WINTER VALUES...

NO MATTER WHERE YOU PURCHASED YOUR FORD, WE WILL SERVICE IT AND ALSO HONOR YOUR WARRANTY.

MOTORCRAFT ENGINE TUNE-UP SPECIAL

Inspect, clean, adjust, replace, oil, check spark plugs, wires, distributor cap, rotor, belts, hoses, fluid levels, filters, brakes, lights, tires, steering, suspension, chassis, and body.

SPECIAL PRICE: PARTS AND LABOR

4 Cylinders	\$48.99	6 Cylinders	\$57.99	8 Cylinders	\$67.99
5 Cylinders	\$52.99	7 Cylinders	\$62.99	9 Cylinders	\$72.99

FREE BRAKE CHECK

To all Ford & Lincoln

Oil Service, Tire Rotation, Fluid Levels, and Safety Inspection.

MOTORCRAFT BATTERY SPECIAL

Free 30-day money back guarantee.

Free 24-hour battery service with 24-hour delivery.

Free 24-hour battery service with 24-hour delivery.

ROTATE TIRES

Free 30-day money back guarantee.

Free 24-hour tire service with 24-hour delivery.

MEAD Ford SINCE 1924

315 WASHINGTON AVE. BELLEVILLE 759-3000

Golden Comments

By Jim Golden

A casual glance in preparation of computing the 1990 Federal income taxes indicates potential fiscal problems. Social Security recipients may be confronted with should they be in the higher income brackets and on Medicare.

Internal Revenue Service instruction forms emphasize the importance of using the worksheet to determine if any of your benefits are taxable. During 1990 Social Security Benefit Statements may have increased as shown in Box 5, in some instances by more than \$500 over the previous year, which could subject a substantial portion of your total annual income to taxation.

Subject to specified exceptions, amounts of \$25,000 or more for single filers; and \$32,000 for married filers would subject their income or a portion of it to taxation.

The residents of Tappan Ave. and those of Malone Ave., dwelling between Washington and Union Avenues in Belleville are incensed, indignant, angry and aroused over the deplorable, pot-holed road conditions of their streets which are an ignored disgrace and a sad reflection upon the "benign-neglect" that has been and is indeed now given to these badly ignored and hazardous roads.

Car's wheel alignment, shocks, tires and bodies, along with other damage are prevalent and repairs costly, for which the township's negligence could be readily subjected to suit.

These streets are busily used because the First DeWitt bank is on the corner of Washington Ave. and Tappan Ave. Also to the chagrin of the residents of these two streets, the heavy beer, liquor and soda trucks, whose drivers wanting to avoid the traffic light at Union Ave. and Division Ave. which they had used, now use these two light traffic streets instead...they are but 28 feet wide.

We had long suggested that both Tappan Ave. and Malone Ave. be posted as light traffic streets only and that they be made one way only in opposite directions because it is difficult to pass with vehicles coming in both directions.

On occasion we had made suggestions to these effects to public officials, but they fell upon deaf ears. We had, after the "Taj Mahal" Ordinance had legally passed, urged the then governing officials to proceed in construction of the proposed new town hall edifice which would have included the local Board of Education Offices, making it possible to possibly sell the No. 1 school property to put it on the ratable property taxable list...they "buckled". They should not have. The taxpayers would have been better off today.

We have little ken, nor knowledge, of Mr. Kendall, the now Township's Manager's, talent nor plans for the community, however, we would respectfully suggest that he give serious consideration, in view of the lack of parking facilities in the business area of Washington Ave. near Town Hall that the one-way direction of Greenwich St. be reversed from North to South to South to North so that the Fidelity Bank Auto banking window could be placed at the rear of the bank eliminating double parking on Washington Ave. and that people could become familiar with available parking facilities in that area that are presently unknown to them...some of it is privately owned, but, the town should be able to "work out" some arrangement that would be beneficial to all, since most of the property owners have businesses on the Washington Ave. frontage.

Also, many properties on the west side of Washington in the business area have rear property which could be excavated, at moderate cost, for parking with available driveways, should compatible arrangements be effected with local governmental collaboration of the township's legal department to improve the business area parking problem.

The potential solution to ameliorate the shopping problem that would enhance business is to provide parking. Should Mr. Kendall be disposed to discuss any of our proposed prospects, we should welcome the opportunity of reviewing many of them at any time.

WE BUY OIL

CONVERTED TO GAS?

WE SPECIALIZE IN FUEL OIL TANK CLOSURES

647-9297

ANCO TANK & PUMP

Meyer's

Cafe - Restaurant

Have Your Next Affair In Our Brand New Dining Room

- Graduations • Meetings
- Showers • Birthdays • Funerals
- Sunday Buffets

277 Franklin Ave., Nutley

667-8587

YOU DON'T WANT TO LEAVE YOUR OLDER RELATIVE ALONE?

NOW THERE'S AN ALTERNATIVE

SENIOR CARE & ACTIVITIES CENTER

SERVICING ESSEX COUNTY

46 PARK ST., MONTCLAIR • MON-FRI • 783-5589

TRANSPORTATION FOR WHEELCHAIR BOUND NOW AVAILABLE

UNITED WAY MEMBER AGENCY

Belleville Transmission & Auto Repair

FREE 5 POINT TRANSMISSION CHECK!!!

- FLUID LEVEL
- FLUID CONDITION
- LEAKS
- ROAD TEST
- LINKAGE

TRANSMISSIONS

from **\$475.00** incl. Parts & Labor

FREE ESTIMATES!

190 WASHINGTON AVE. BELLEVILLE 759-5123

CORNER OF BUTTERS ST. MAJOR CREDIT CARDS ACCEPTED



No Discounts Apply

OUR OPINION

THOUGHT FOR TODAY

This is the beginning of a new day. God has given me this day to use as I will. I can waste it or use it for good. What I do today is important because I'm exchanging a day of my life for it. When tomorrow comes, this day will be gone forever, leaving in its place something I have traded for. I want it to be gain, not loss; good, not evil; success, not failure; in order that I shall not regret the price I paid for it.

Costly ban

The Belleville municipal budget will be burdened this year by a major appropriation mandated by state legislation banning ocean dumping of treated sewage. Town Manager Bertrand Kendall estimated it could cost Belleville as much as \$400,000 more for its Passaic Valley Sewer Contract in 1991.

The question we must ask, especially during these troubled economic times, is why towns like Belleville are forced into these costly appropriations?

The federal ban on ocean dumping does not take effect until the end of the year. Yet, New Jersey chose to end ocean dumping as of March 17.

The sewage New Jersey dumped in the ocean was triple-treated, and considered to be nearly potable before being dumped at least 106 miles out at sea, beyond the continental shelf.

Now, the sewage must be trucked to a dewatering facility and exposed as solid waste.

Meanwhile, New York will continue to dump untreated sewage into the ocean for the rest of the year and possibly beyond. While our neighbors across the Hudson continue dump, New Jersey municipalities will struggle to stay afloat with their 1991 budgets.

'Set-aside' pigs

Our attention has been drawn to a public notice published by Newark, amending a minority business enterprises "set-aside" program.

According to the notice, 604 minority business enterprises (MBEs) and women business enterprises (WBEs) were registered for this "set-aside" program in Newark.

Of the 604 MBEs and WBEs, 361 owners were black (a 60 percent majority); 46 were Hispanic (mostly Puerto Rican); 16 were Asian (whomever that designation embraces); 140 were residents (of Newark, mostly black); and 283 owners were "certified" (whomever that term covers or hides, as it were).

The "set aside" dollar outlay, voted by Newark City Council, was \$18,935,833 — more than the municipal operations budget of Bloomfield!

The liberals tell us that "set aside" and "affirmative action" programs are NOT quotas but in keeping with equal opportunity. How does this Newark "set aside" program — and just about every municipality has a version thereof, as does Bloomfield in its handling of federal funds — square with equal opportunity?

George Orwell took a look at Communist Russia in the 1930s and wrote "Animal Farm," a bitter and prophetic satire on Stalin's paradise. A memorable line: "All pigs are equal, but some pigs are more equal than others."

Perhaps Orwell today would write: "All pigs are equal, but some pigs are set aside."

YOUR OPINION

A debatable subject For auto inspection

To the editor:

Take heed Ann Mazur. Your article in the Belleville Times was quite apropos as to my letter of Gabe's opinions — and understandable. You, if you recall, I mentioned that his goods and their are complimentary and critical also. But the issues — the derogatories Gabe uses to define the general public are uncalled for. I want it known that I've exchanged barbs with him before and still maintain a friendly relationship.

In the past I've criticized Gabe that he called the townspeople clowns. Now we're paper heroes, but regardless of your personal opinion of me you'll find that my letters are street talk and gentlemanly and I try not to involve personalities unless it concerns tax dollars being used and abused.

Mind you, many of his remarks are well taken and only lately I've criticized the council government members who are dragging their feet, not using our money frugally and not expediting town services for which they are accountable and paid. Citing pothole repairs sets an example — that a simple operation is not done and the more complicated operations an impossibility — that the Cortlandt Street yard was clean and now the state is involved. Again we have approximately 50 town workers and directors and conditions progressively on the down side. The manager's is the final word and should be accountable.

Our council is a debatable subject — sincerity and performance are synonymous, but yet to be proven and a recent incident involving the council and a hired contractor is unacceptable. The on-the-job training program is inadequate in that the ball is pitched from base to base with big dollars involved in services — and results not forthcoming.

Now comparatively speaking I would like to inject that regardless what is thought of ex-commissioner Frantantoni, one must give credit where due — that he extended himself in all directions, in the public behalf, as director of public property.

He was instrumental in getting grants available to us now — and went to Trenton on his time to do so. He was in charge of the engineering department and the innovations of public property, recycling, arbitration of town employees' overseeing engineering projects, in constant touch with people and their problems and much more, to the tune of 60 hours a week or better for the \$6,500 per year. That's quite a buy.

He also duplicated the services of the councilman and three directors combined to the tune of approximately \$250,000 per year, plus perks and benefits. His services were almost free of charge and I wouldn't do it for that price — would you? I doubt it!

So can it, Ann. Sorry to use your pun. Basically, I believe you're an elegant lady and if I've offended you, my apologies.

Dan Ippolito

Not in the running

To the editor:

This letter is addressed to the residents of Ward 4 — District 1.

The following letter was recently submitted to the chairman of the Belleville Democratic party:

This is to advise you that I will not be seeking re-election as a county committee person in the June election.

I am telling you of my decision at this time so that you will be able to seek out a person to fill the vacancy who will serve the district with the dedication and integrity that the people in this area have become accustomed to.

Although I will no longer be representing you as your district leader, please remember that my door will always be open to you. Should you be in need of assistance, please feel free to call on me.

I have enjoyed many productive years of service to the community and have fought many battles and made many friends. I thank each and every one of you for your support and vote of confidence over the years.

Lois M. Servidio

Not a solution

To the editor:

I would like to respond to the letter written by George Mitchell last week about dropping the "A" bomb on Iraq.

Mr. Mitchell, I really don't think that killing all of the innocent people of Iraq and destroying the country with the "A" bomb is the best solution for ending this war.

Michele Suchomel

To the editor:

Beginning in March, many New Jersey automobile owners will have to comply with a new law which requires an automobile physical damage inspection in order to obtain auto insurance. The law is designed to reduce auto insurance fraud, which costs the insurance industry and its consumers \$16 billion a year.

As a professional insurance agent and director/officer of the Professional Insurance Agents of NJ Inc., a trade association representing insurance agents, I would like to give a brief overview of this law and how it will benefit us all.

The new inspection will be performed by an insurance agent or other insurance company representative. It is required in addition to the annual safety and auto emissions inspection called for under motor vehicle law. The inspector will look for pre-existing damage and confirm that all information given about the vehicle is accurate. Professional insurance agents in this area can answer questions about the new inspection procedure.

At first glance, many consumers may view this as just one more in the long list of rules, regulations and laws that appear to be more inconvenient than beneficial. However, the inspection will help detect and deter fraudulent insurance claims, which we all pay for through increased premiums. Insurance frauds who insure non-existent cars, report them stolen and submit phony claims for thousands of dollars, or who insure already damaged vehicles then submit claims for repairs, will find it difficult to carry out their scams thanks to the new inspection law. These and similar scams happen all too often. In fact, for every insurance premium dollar paid in the United States, 15 cents pays for insurance fraud.

Insurance companies and lawmakers are doing what they can to prevent fraud, but the consumers must do their part, too. I encourage consumers to reject the belief that only insurance companies get hurt by phony claims. In reality, the honest policyholder pays. So when it comes time for your car's physical damage inspection, remember that lawmakers had your pocketbook in mind when they enacted this law. Any policyholder with questions concerning the new inspection requirement should contact their local professional insurance agent.

Gerard Iacangelo, AAI
PIA Director
Michael F. Iacangelo & Co., Inc.
Belleville, N.J.

Pray for peace

To the editor:

Wesley United Methodist Church invites everyone of all religions and faiths to join with them on Wednesday nights at 7:30 to pray for peace.

In this time of uncertainty, it is important that we join together in the common desire for a free, peaceful world. We need to share our concerns and be united in prayer.

All differences are so small when we think about the cost of world peace.

Join us to sing praises of faith and to support each other in sharing our concerns for peace and the safe return of our men and women who will give that to us.

Wesley is located at 225 Washington Avenue, across the street from the Library.

For a peaceful peace

Carolyn Smith

Confusing issue

To the editor:

I have lived in Belleville a long time and am somewhat confused. I am wondering if there are two Frank J. Noonan, M.D., councilmen of Belleville?

One Frank J. Noonan writes letters to the editor criticizing his fellow councilpersons and their voting practices, accusing them of mismanagement and wasteful spending. The other Frank J. Noonan voted for a \$3,500 salary vs. working free, as in his campaign promise. Didn't this Frank J. Noonan also vote to hire the town manager, town engineer, planning consultant, and even the engineering firm that the other Frank J. Noonan is criticizing? Isn't it clear beyond reasonable doubt that there are two Frank J. Noonan, M.D., councilmen in Belleville?

Possibly this might clear up the issue of residency. It is that one Frank J. Noonan resides at Holmes Street and the other resides at the Seaside Resort of Clifton.

Anne Zalutko

Along the Passaic

"Get Used to it, Son. . ."

By Phyllis A. Strohmeyer
Trustee, Passaic River Coalition
"...this will be what you will have to deal with the rest of your life." Our son was trying to pretend he was not the person who took the last serving from the cereal box. In our house, he who takes the last serving from a cardboard box must collapse it and place it in the recycling container. My husband was trying to impress the boy with the fact that despite his resistance, our American lifestyle has been permanently altered. Our carefree attitude has to be replaced with heightened consciousness when it comes to solid waste disposal, energy consumption, and protection of our natural resources. My husband's statement stuck in my mind (as surely as it floated from our son's mind) with the glue of guilt. It is, after all, our generation who should have recognized this problem before it reached a crisis. So, I resolved, it is time to teach our children well.

Toy purchases need to be carefully considered. No more cheap plastic toys that are lost or discarded after brief play time. Toys should be bought to last then passed along to a younger child. This approach will result in fewer toy purchases, but then we all develop into adults with far fewer plastic pieces. Cardboard packaging should be collapsed and recycled. Children should be discouraged from buying toys with excessive plastic packaging or, at least, encouraged to write to the toy company to ask them to reduce packaging. Toy companies are likely to listen to their young consumers.

Try composting. It is relatively simple, especially with our children's help. We can involve them in the magic of turning kitchen scraps and garden waste into humus. Take turns carrying the waste to the compost heap and in approximately two months, show them the rich, black fertilizer that results. They will be amazed and you will have made constructive use of up to 25 percent of your solid waste.

Explain the link between energy use and

the Persian Gulf crisis. Tell the children that it takes oil to produce electricity and gasoline. Give them a handle on their war anxiety by letting them feel helpful. In past wars, children could roll bandages, or give up sugar. In this war, they can turn off lights and walk instead of ride.

Take children for walks in the woods. Observe the condition of the streams. They should be clear, odorless and have rocky bottoms. Explain how our trees clean our air, muffle noise, and absorb our excess stormwater. Sit quietly on a rock, and try to spot wildlife. The children will be thrilled to see the critters. This experience is guaranteed to result in fond, childhood memories.

Our children are required to take a big leap backward with regard to solid waste disposal, energy consumption, and care for our natural resources. We must all learn to get along with less packaging, energy use, and frivolous car rides. We need to prepare our children to inherit a clean and healthy earth, so we all may as well "get used to it."

Belleville Times

Serving Belleville Since 1909

U.S. PSN 049-370

Publisher: Frank A. Orechio

Assistant to the Publisher:
Arnie Ziem

Published Every Thursday
At 155A Washington Ave.
Belleville, N.J. 07109

Second Class Postage Paid
At Newark, N.J.
Postmaster: Send address changes
to: The Belleville Times,
155A Washington Ave., Belleville, N.J. 07109

Social Editor: Helen Maguire
Sports Editor: Michael Lamberti
Advertising Mgr: Celeste Federico
Art Director: Diane Lombardy

All departments call:

759-3200

Fax: 667-3904

Annual Subscription \$14.00
Senior Citizens \$ 7.00



Nutley Pet Center
406 Main Street, Belleville



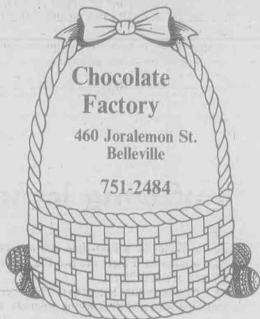
Flowerama
180 Washington Avenue, Belleville



your **FREE EASTER** ham or turkey

ENTER AT ALL THESE PARTICIPATING STORES.

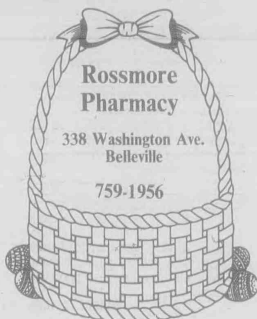
Enter each week ... winners will be drawn March 18th, 1991
and announced in this paper on March 21st, 1991. Good Luck!



Chocolate Factory

460 Joralemon St.
Belleville

751-2484



Rossmore Pharmacy

338 Washington Ave.
Belleville

759-1956



Arena's Hair Salon

99 Franklin St.
Belleville

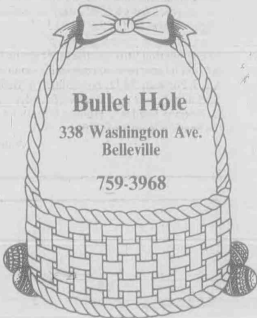
759-9794



Frades

Deli & Meat Market
311-313 Union Ave.
Belleville

759-3509



Bullet Hole

338 Washington Ave.
Belleville

759-3968



NOT JUST NAILS

315 Greylock Pkwy.
BELLEVILLE

751-6887

NOT JUST NAILS II

563 Washington Ave.
BELLEVILLE

759-6885



Video Dynasty

388 Main Street
Belleville

759-5350



Centanni Italian-American Deli

182 Overlook Ave.
Belleville

751-3910



Belleville Pub

140 Washington Ave.
Belleville

751-9545



Nutley Pet Center

406 Main St.
Belleville

751-1221

RULES: The merchants listed on this page make winning your ham or turkey as easy as filling out a coupon. You may be a lucky winner of either a delicious canned ham or 12-14 lb. turkey. Winners will be drawn March 18, 1991 and announced in this paper on March 21, 1991. Simply clip out and fill in the coupon at right or pick-up a coupon at any or all of these participating merchants and drop in the red & white box displayed. It's that simple. No purchase necessary to win.

— CLIP OUT —

Name _____

Address _____

Phone _____

No Purchase Necessary.
Contest Ends March 18, 1991.

AS ADVERTISED IN

The Nutley Sun • Belleville Times • Bloomfield Life
Orechio Publications, 800 Bloomfield Ave., Nutley, N.J. 07110

EVENTS IN THE AREA

Fairs, flea markets, rummage...

Craft fair, 10 a.m. to 4 p.m. March 2, Brookdale School, 1230 Broad St., Bloomfield. 39 crafters, food. Sponsored by Home and School Association.

Craft show and flea market, 9 a.m. to 4 p.m. March 2, 3, St. Clare's Parish Center, 69 Allwood Road, Clifton. For more information, call 777-7590 or 779-1422.

Flea market, craft show, 9 a.m. to 5 p.m. March 3, Nutley High School, 300 Franklin Ave. Over 100 vendors. Free admission. Project Graduation fundraiser. For more information, call 997-9535.

Flea market, crafts, baseball cards, 9 a.m. to 5 p.m. March 10, Belleville High School, 100 Passaic Ave. Indoors and outdoors. Band fundraiser. Over 100 vendors. For more information, call 997-9535.

For singles only...

Social dancing, 7 to 11 p.m. every Friday, Nutley Italian-American Club, 642 Franklin Ave. For more information, call 284-0639 after 5 p.m.

Bethany O.N.E.S., for singles, widowed, divorced of all religions, 12:30 p.m. third Sunday, Bethany Presbyterian Church, corner High Street and W. Passaic Avenue, Bloomfield. \$5 or food item of equal value for buffet dinner. **March 17: St. Patrick's Day.** Songs of Ireland film from Bloomfield Public Library. For more information, call 338-7692.

Young Adult Singles, first and third Tuesdays, Holy Family School, Brookline Ave., Nutley, 21 to 43. For information, call 751-2415 or 759-9194.

Essex County Chapter of Widows and Widowers, 8 p.m. second Tuesdays, Reflection Hall, Hillside. All ages. For more information and directions, call 751-3015.

New Jersey Moonrakers, for tall adults, 8 p.m. second Tuesdays, Meadowlands Hilton, 2 Harmon Plaza, Secaucus. Dancing and socializing following meeting. \$3. For more information, call 822-0362.

Support groups...

Job Seekers of Belleville, a skill development and support group for unemployed, underemployed, first time entries into job market, 7:30 to 9:30 p.m. Wednesdays, Fewsmith Church, Union and Little streets. No fee. Refreshments. Call Dave at 450-1858 or the church 9:30 a.m. to noon at 759-6869.

Catastrophic illness support group, 6 to 7:30 p.m. first and third Tuesdays, The Hospice, 34 Label St., Montclair. Separate sessions for families and patients. For more information, call 783-7879.

New Jersey Chapter of NAAFA (National Association to Advance Fat Acceptance), social events, human rights information, monthly newsletter. For more information, write P.O. Box 10203, Nutley, 07110 or call 667-2957.

Overeaters Anonymous, self-help group for compulsive overeaters or people with eating disorders, 8 p.m. Tuesdays, Bethany Lutheran Church, New and Joralemon streets, Belleville. For more information, call 759-0770, 8 p.m. Wednesdays, Christ Church, Park and Bloomfield avenues (opposite Grand Union), Bloomfield. For more information, call 746-4658.

Living with Cancer, for cancer patients and their families, 7 to 9 p.m. third Wednesdays, Mountinside Hospital, Montclair. 429-6140 or 429-6128.

Recovery Inc., a community mental health self-help group for persons who suffer from nervous symptoms and fears, 7:30 p.m. Wednesdays, Parks Dept., 44 Park Ave., Nutley. For free literature, call 766-7466.

Make Today Count, a support group for patients and families dealing with cancer and other life-threatening illnesses, 7 p.m. Mondays, Clara Maass Medical Center, Belleville, 424-2230.

UNHOOKED, for drug and alcohol abuse. Call 643-5050 noon to 7 p.m. Monday through Friday for New Jersey treatment referrals and substance abuse information. Confidential.

Bereavement & Injured Victims of Auto Crashes, sponsored by Essex County Mothers Against Drunk Driving, Victim Assistance program. For more information, call 344-4329.

New Jersey POISON INFORMATION Education System hotline: 1-800-962-1253. NJPIES is equipped with a computer system that contains information on drugs and chemicals involved in poisoning incidents and can give immediate instructions on what to do. If necessary, you will be referred to an emergency room or private physician.

SOCIAL SECURITY 24-hour toll free number, 1-800-234-SSA (1-800-234-5772). Live operators on duty 7 a.m. to 7 p.m., Monday through Friday. After 7 p.m. and before 7 a.m., weekends or holidays, leave your name and number someone will call you back.

Cancer Response System, a toll-free answer line providing information on all aspects of cancer, 1-800-ACS-2345, 9 a.m. to 5 p.m. Monday through Friday.

New Jersey Eating Disorders Hotline, for anyone suffering with anorexia nervosa, bulimia or compulsive eating problems, 1-800-624-2268.

Teen hotline, a nationwide toll free hotline for homeless and troubled teens and families, 1-800-999-9999.

Meetings...

Nutley High School Parents Council, 7:30 p.m. March 6, high school cafeteria. John Singaglia, business administrator and board secretary will discuss 1991-92 school budget.

AARP Belleville Chapter 2051, 1 p.m. March 7, Fewsmith Memorial Presbyterian Church, 444 Union Ave. Musical entertainment by Living Tones. Guests welcome.

Hoffmann-La Roche Retirees, 1:30 p.m. March 9, Roche complex. Four man quartet will entertain. Three buses available for Medieval Times dinner and show.

Ladies auxiliary, Stuart E. Edgar Post 493, VFW, Post Home, 271 Washington Ave., Nutley. Membership open.

Belleville Historical Society, 7:30 p.m. first Tuesday, Belleville Reformed Church, 171 Main St. Membership open.

Kingsland Trust, 8 p.m. second Wednesday, Kingsland Manor, 3 Kingsland St., Nutley.

Tri-County Camera Club, 8 p.m. Nutley Museum, 65 Church St. Open to the public unless otherwise indicated. **March 5:** black and white print competition and color slide competition; **March 12:** nature slide competition and Comedy in Nature competition; **March 19:** program, 1990 Westchester Nature Salon.

Court Gracia 751, Catholic Daughters of the Americas, 8 p.m. Nutley Annex Post 30, 184 Park Ave., Nutley. Business meeting March 4, social March 18. For information, call Erma Mastro at 667-4430.

Deborah League of Bloomfield, 8 p.m. second Tuesdays, Civic Center, 84 Broad St., first floor. Refreshments. Everyone welcome.

American Legion auxiliary Nutley unit 70, 8 p.m. second Monday, 45 Franklin Ave.

Essex County American Legion auxiliary, 8 p.m. second Thursday, 45 Franklin Ave., Nutley.

Essex Salon No. 8, Eight and Forty, 8 p.m. third Monday, 45 Franklin Ave., Nutley.

Ladies auxiliary, Younginger-Alden Jr. VFW Post 275, 7:30 p.m. second Wednesday, 17 Belleville Ave., Belleville. Membership open.

Nutley Junior Women's Club, 8 p.m. first Monday, clubhouse, 216 Chestnut St. Open to women 18 to 35. For more information, call membership chairman Denise Pender at 235-1822.

Evening Membership Dept. of the Nutley Woman's Club, 8 p.m. second and fourth Thursdays, clubhouse, 216 Chestnut St. Women of all ages invited.

VFW Post 493, 8 p.m., 1st and 3rd Tuesdays, 271 Washington Ave., Nutley. Membership open.

ENJA-North Jersey Amiga Users Group, a non-profit computer users organization, 7:30 p.m. first Tuesday, American Legion Post 70, 45 Franklin Ave., Nutley. Demonstrations, small group seminars. Free. Coffee served.

Belleville Kiwanis Club, 6:30 p.m. Thursday, San Carlo Restaurant, Lyndhurst.

Essex Chapter, American Association of Medical Assistants, second Wednesdays, Doctors' Lecture Hall, Clara Maass Medical Center, 1 Franklin Ave., Belleville. For information, call 743-7686.

Ladies auxiliary, Post 711, VFW, 8 p.m. second Thursday, 369 Broughton Ave., Bloomfield. For membership information, call Helen Mooney at 338-8053.

VFW Post 711, 8 p.m. second and fourth Mondays, 369 Broughton Ave., Bloomfield. For membership information, call 338-4256 or 338-8404.

Belleville Lions Club, 12:15 p.m. second and fourth Thursdays, Forest Hill Field Club, Bloomfield. Call Dennis Mautone at 751-4100.

Junior Woman's Club of Belleville, 7:30 p.m. second Monday, 51 Rossmore Place. For women 18 to 35. For more information, call Terry at 759-8669.

Juniorettes Club of Belleville, 6 p.m. second Monday, 51 Rossmore Place. For girls 12 to 18. Members wanted. Call Terry at 450-4835.

Junior Woman's Club of Bloomfield, 8 p.m. second and fourth Tuesdays, September through June, Civic Center, 84 Broad St. Open to women 18 to 35. For more information, call Laura Curcio at 338-0614.

Bloomfield Kiwanis Club, 12:15 p.m. Thursday, Forest Hill Field Club, Belleville Ave., Bloomfield.

Nutley Speakers Club, 7:45 p.m. Thursdays, 6 Willow Place. New members welcome. For information, call 667-5473.

White Eagle Unit 448, American Legion Auxiliary, 8 p.m. fourth Tuesday, Essex Manor, 41 Broughton Ave., Bloomfield.

VFW Post 493 auxiliary, second Tuesdays, Post Home, 271 Washington Ave., Nutley. Membership open. Write to Stuart E. Edgar Post 493 Ladies Auxiliary, 376 Chestnut St., Nutley.

Belleville Old Guard, 9:30 a.m. second and fourth Tuesdays, Fewsmith Memorial Presbyterian Church, 444 Union Ave. Refreshments.

Woman's Club of Belleville, 7:30 p.m. third Monday Sept. to June, 51 Rossmore Place. Next meeting: Feb. 18.

Fundraisers...

Dinner fashion show, sponsored by Class of 1991, Nutley High School, 6:30 p.m. Feb. 28, The Cameo, Garfield. \$25. For tickets, call Joanne Aromando at 661-3312.

Card party to benefit Tommy John Zakrzewski, 8 p.m. Feb. 28, Nutley Woman's Club, 216 Chestnut St. \$5. For reservations, call 667-1120 or 667-7120. Sponsored by Evening Membership Dept.

Bazaar, sponsored by AARP North Essex Chapter 57, 9:30 a.m. to 4 p.m. March 7, Bloomfield Civic Center, 84 Broad St. Homemade baked goods, new and almost new items, plants, books, jewelry, boutique, crafts. Coffee and cake on sale.

Fish and chip dinner, sponsored by St. Mary's Rosary Society, March 1, St. Mary's Church, 17 Magr. Owens Place, Nutley. \$7.50. Take out available. Catered by Argyle of Kearny. For tickets, call 667-7034, 667-8698 or 235-1784. No tickets sold at the door.

Born to Shop, a dinner/shopping fund raising event sponsored by Community Mental Health Services for Belleville, Bloomfield and Nutley, 6:30 to 10:30 p.m. March 1, The Chandelier, Belleville. For tickets, call 450-3100.

Cocktail party, sponsored by Elks Handicapped Children's Committee to benefit Tommy John Fund, 2 to 6 p.m. March 3, Nutley Elks Lodge, 216 Chestnut St. \$10 includes two drinks, hors d'oeuvres, music, dancing. For tickets, call Frank at 667-7120.

Dance to benefit nursery school at Christ Church, 8 p.m. to midnight March 8, Christ Church parish hall, Park and Bloomfield avenues, Bloomfield/Glen Ridge. \$20 includes professional DJ, dancing, food and beverages. Tickets at the door. For more information, call 482-5309.

Art exhibit and auction, 6:30 p.m. March 8, School 5, Greylock Parkway, Belleville. Previews followed by auction at 7:30 p.m. \$3. Refreshments and lithograph to each guest. For tickets, call Mary Ann at 759-8313.

Country western night, 8 p.m. March 9, Bloomfield Elks 788, 296 Bloomfield Ave. Live music by Country Sunshiners. \$6. Food and drinks available. For information, call Joe Ostroski at 429-1827 or 429-0343. Public welcome.

An Evening at the Hop, sponsored by N.J. Dystonia Medical Research Foundation, 6 p.m. March 10, The Hop, Willow St., Bloomfield. \$30 includes entertainment and food. Cash bar. For tickets and information, call 661-3978 or Joyce at 667-4957.

Annual spaghetti dinner, sponsored by Annets Auxiliary Post 30, 2 to 6 p.m. March 10, 184 Park Ave., Nutley. Adults, \$6; children, \$3. For information, call Mary at 751-4417.

Dinner and races at the Meadowlands, sponsored by St. Mary's Hospital Guild, March 14. Doors open at 6 p.m. \$27 per person includes entrance fee, program, access to clubhouse, dinner (stuffed breast of chicken), gratuities. Reservations by March 7. At hospital gift shoppe at 470-3047.

Chinese auction, 7 p.m. March 15, St. John's Episcopal Church, 215 Lafayette Ave., Passaic. \$3. Refreshments.

Fish and chips dinner, sponsored by Louise Palagano & Friends, 6 to 7:30 p.m. March 15, Bloomfield Civic Center, 84 Broad St. \$8.50. Takeout orders on request. Partial proceeds to Bloomfield Police Department vest fund. For more information, call Celeste Roppolo at 748-0297.

Breakfast, sponsored by Nutley Elks 1290, 9 a.m. to 1 p.m. March 17, 242 Chestnut St. Pancakes or eggs with bacon. \$5 per person; \$4 senior citizens; \$3 children under 12.

Up and Away Treasure Tray, sponsored by Belleville School & 7 p.m. March 22, Branch Brook Manor, Belleville. Advance tickets only. \$20 includes 25 tickets, full dinner and dessert. For tickets, call Karen McGinley at 751-5311 or Julie Murnock at 489-8971.

3rd annual Bunny Festival, sponsored by Woman's Service Corp. of Bloomfield, 2 to 4 p.m. March 23, Demarest School, 465 Broughton Ave. \$4 includes refreshments, awards, face painting, bunny ears. Chinese auction and pictures with Easter bunny available. Entertainment by Tales a La Puppetry. For tickets, call 893-9057.

10th annual dinner fashion show, sponsored by Spring Garden School PTA, 6:30 p.m. April 4, Fiesta, Woodridge. Fashions and beauty ideas from Panico Salon of Ridgewood. For tickets or more information, call Teri Tedesco at 661-3735 or Donna Cocco at 284-1282. \$23.

Entertainment 1991 coupon books, Grace Church, Nutley. Call 235-1177; American Cancer Society. Call 736-7770; Men's Club, Congregation Avathath Achim. Call 759-9394. St. Mary's Home and School Association, Nutley. Call Debbie Mowad at 667-5081 or St. Mary's School at 667-0801.

Other events...

Free health screenings, at Montclair Community Hospital, 120 Harrison Ave., Montclair. Appointments required. Call 744-7300. ext. 4296, 10 a.m. to 1 p.m. daily. **March 2:** colon rectal cancer, Dr. Swerdlow; skin cancer, Dr. Lo Verme; **March 16:** eye problems, Dr. Pruzon. Corporate Outreach Team offers free health screenings for employees at your place of business. To arrange for an on-site screening, call Marie Orpello at 746-4644.

World Day of Prayer, 1 p.m. March 1, Holy Trinity Lutheran Church, Hillside and Vreeland avenues, Nutley. Child care available.

Antiques show and sale, sponsored by Associated Antiques Dealers of New Jersey, March 1, 2, 3, Royce Hotel/Governor Morris Inn, 2 Whippany Road, Morristown. 7 to 10 p.m. March 1; noon to 9 p.m. March 2; noon to 5 p.m. March 3.

Winter concert, presented by Bloomfield Civic Band, 3 p.m. March 3, Bloomfield Middle School, Huck Road. Guest appearance by Rutgers University Kirkpatrick Choir. No charge.

Investment seminar, 7 to 9 p.m. March 4, Nutley Adult School, Nutley High School, 300 Franklin Ave. Money and tax management in current financial climate here and abroad. \$6. For information and registration, call 667-2525.

Map reading, refresher seminar, 7:30 to 9:30 p.m. March 11, Nutley Adult School, Nutley High School, 300 Franklin Ave. \$6. For information, call 667-2525.

CPR and first aid classes, Nutley Chapter, American Red Cross, 169 Chestnut St. C.P.R. 9 a.m. to noon, March 4, 11, 18. \$40; C.P.R. and Standard First Aid, 7 to 10 p.m. March 5, 12, 19, 26. \$55; C.P.R. and Standard First Aid, 7 to 10 p.m. March 7, 14, 21, 28. \$55; C.P.R.

After 23 Years...

DENTISTRY FOR CHILDREN, P.A.

Is Proud To Announce The

RELOCATION

Of Their Office To:

382 W. PASSAIC AVE.

BLOOMFIELD, NEW JERSEY

(Diagonally across from our old office and adjacent to Broadway Photo)

By Appointment
201-338-1383

Jack Budnick, D.D.S.
Philip Wasserman, D.D.S.
William B. Kuen, D.M.D., M.Sc.D.
Orthodontist

382 West Passaic Ave.
Bloomfield, N.J. 07003

Charles F. Riilli, M.D.

announces the opening of his practice of

UROLOGY

at 256 Broad Street, Bloomfield, N.J. 07003

Medicare Assignment Participant — Insurance Accepted

Practice includes:

Prostate Cancer and Disease • Impotence • Infertility

Vasectomy • Urine and Bladder Control Problems

Kidney Stone Disintegration

Bladder and Kidney Infections and Disorders

EVENING AND SATURDAY APPOINTMENTS AVAILABLE

Bloomfield

(201) 743-4450

Harrison

(201) 482-7070

Beck-Mazza engagement told; nuptials next year

Ronald Beck of Nutley and Phyllis Beck of Belleville announce the engagement of their daughter, Lucia, to Russell Mazza, son of Mr. and Mrs. Salvatore Mazza of Belleville.

The troth was made known Dec.

24. The wedding is planned for July 18, 1992.

Miss Beck, an alumna of Belleville High School, works in Montville. Mr. Mazza, also a Belleville High School graduate, is with Carpenters' Local 1342, Bloomfield.



Lucia Beck — Russell Mazza



Rosanne Servidio — Jeffrey Hauer

Rosanne Servidio to wed Jeffrey Hauer next spring

Dena Servidio of Belleville announces the engagement of her daughter, Rosanne, to Jeffrey Hauer, son of Isabelle Hauer of Nutley and the late Robert L. Hauer.

The wedding is planned for April 11, 1992.

Miss Servidio, daughter also of

the late Joseph P. Servidio, is a graduate of Belleville High School. She is a customer service representative at Nutley Savings Bank.

Mr. Hauer, an alumnus of Nutley High School, is a senior planner at ITT Avionics.

Toniann Benacquista, Phil Canning to marry

Mr. and Mrs. Anthony Benacquista of Nutley announce the engagement of their daughter, Toniann, to Phil Canning, son of Mr. and Mrs. Michael Canning of Belleville.

The troth was made known Christmas Eve. The wedding is planned for the spring of 1992.

Miss Benacquista, an alumna of Nutley High School and Artistic Academy, Fairlawn, is a manicurist at Illusions, Nutley.

Mr. Canning, a graduate of Belleville High School and RETS, is a senior service technician with Copier Store, Verona.



Toniann Benacquista — Phil Canning

Chorus of Communities starts rehearsals for next Messiah

The Chorus of Communities, sponsored by the Belleville Ministerium, has begun rehearsals for its second concert, the Easter portion of Handel's "Messiah."

Rehearsals take place at 4 p.m. Sundays at Montgomery Presbyterian Church, 638 Mill St., Belleville.

There is still room for more lovers of choral music to join this ecumenical inter-community chorus which includes singers from Roman Catholic and Protestant church choirs in Belleville, Bloomfield, Cranford, Keamy, Livingston, Newark, Nutley, Paterson, Pompton Lakes, Verona and surrounding communities.

The second concert is scheduled for 3 p.m. April 28 at St. Valentine's

Church, 125 North Spring St., Bloomfield. The concert will also include vocal soloists, organ accompaniment and orchestral interludes by members of the New Jersey Symphony.

It has been said that Handel's Easter portion of the "Messiah" is even more beautiful than the oft-sung Christmas portion. The Easter portion of the oratorio recounts Christ's crucifixion and resurrection. It is a stirring sequence of solo arias, recitatives and choruses.

All interested singers are invited to contact the director, William C. Moore at 895-4563 daytime or 895-3317 evenings or Bethany Lutheran Church, 155 New St., Belleville, at 759-1555.

Belleville scouts in Scout-A-Rama

Girl Scouts throughout Essex County will participate in "Scout-A-Rama '91," a council-wide event sponsored by the Girl Scout Council of Greater Essex County. The event, open to the public, will be held 10 a.m. to 4 p.m. March 16 at Caldwell College Student Center, Ryerson Ave., Caldwell. Admission is \$1.

Belleville troops, along with other area Girl Scouts, have been preparing exhibits and demonstrations and will be performing songs, skits and dances during the day-long program. Activities will be based on aspects of the Girl Scout program including understanding the physically challenged, protecting the environment, promoting international understanding and participation in the arts.

Scout A-Rama '91 will allow visitors a chance to see what Girl Scouting offers today's girls. Those attending will have an opportunity to visit booths and see demonstrations by representatives of the 4HSeeing Eye Puppy Project, the American Heart Association, the Essex County Environmental Center and the Cheshire Home to name a few. In addition to troop performances, shows will be presented by a Greek chorus, Armenian dancers and a gospel choir.

An early registration booth for summer camp programs will also be available as will information on both resident and day camp sessions. For information, call the Girl Scout Council of Greater Essex County at 746-8200.

STORK CLUB

Nicole Danielle Fetch

A second child, a daughter, Nicole Danielle, was born to Mr. and Mrs. Richard Fetch of Belleville Feb. 15 at Clara Maass Medical Center, Belleville. Birth weight was 6 pounds, 5 ounces. She joins Marisa, three.

Mrs. Fetch is the former Michelle Tumminelli, daughter of Georgeanne Tumminelli of Nutley. Mr. Fetch, son of Mr. and Mrs. Richard Fetch of Belleville, is a salesman with Electrified Water, East Orange.

Rachel Marie Baumsteiger

A daughter, Rachel Marie, was born to Mr. and Mrs. Ronald Baumsteiger of Madeira Beach, Fla. Jan. 5.

Mrs. Baumsteiger is the former Mary Burrell, daughter of Mr. and Mrs. Leonard W. Burrell of Toms River, formerly of Belleville.

Mikki Lynn Gable

A third child, a daughter, Mikki Lynn, was born to Mr. and Mrs. Michael Gable of Belleville Feb. 12 at Clara Maass Medical Center, Belleville. Birth weight was 7 pounds, 9 ounces. She joins Ashley and Casey.

Mrs. Gable is the former Tracy Limongello, daughter of Mr. and Mrs. Victor Limongello of Bloomfield. Mr. Gable, son of Mr. and Mrs. Michael Visel of Belleville, is with Local 342.

Angelo Cordero III

A first child, a son, Angelo III, was born to Mr. and Mrs. Angelo Cordero of Belleville Feb. 10 at Clara Maass Medical Center, Belleville. Birth weight was 9 pounds, 14 ounces.

Mrs. Cordero is the former Tracy Ann Stecher, daughter of Mr. and Mrs. Ferdinand Stecher of Belleville. She is a teachers' aid at Magic Cottage Nursery School, Belleville. Mr. Cordero, son of Mr. and Mrs. Angelo Cordero of Belleville, is an aircrewman in the United States Navy.

PMS workshop announced at Clara Maass Medical Center

Clara Maass Medical Center's Community Services Department is sponsoring a workshop for women suffering from Pre-Menstrual Syndrome (PMS) 9 a.m. to noon March 26.

The workshop is suggested for women who experience PMS symptoms such as extreme fatigue, mood changes, fluid retention, forgetfulness, etc. Instructors will define PMS, discuss possible causes and suggest solutions for dealing positively with PMS. Workshop participants will use a symptom chart to determine the presence

and severity of the illness. A slide show and discussion of drug therapy, diet and exercise is also included.

Pre-registration and pre-payment of \$15 is required by March 20. The fee includes educational materials and light refreshments. To register or for more information, call Monique Davis, health educator, at 450-2213.

KITCHENS BY VERSA



We can supply your needs...
AT THE RIGHT PRICE!!!
Bring us your kitchen estimate from Channel Lumber, Ricker's, Mr. Good Buys or Home Depot and **WE WILL BEAT IT.**

Dinner for two with the purchase of a kitchen in excess of \$1,000.00

VERSA SUPPLY CO.

30 Wilson Ave., Newark, NJ

Tel.: 589-3355

OPEN UNTIL 6 PM TUESDAY AND THURSDAY

27th ANNUAL MORRISTOWN, N.J.

ANTIQUES SHOW & SALE

BOYCE HOTEL/GOVERNOR MORRIS

2 WHIPPANY ROAD

FRI. MARCH 1, 7 PM to 10 PM

SAT. MARCH 2, NOON to 9 PM

SUN. MARCH 3, NOON to 5 PM

ADMISSION WITH AD \$3.50

We'll Make You Smile Today



Start Smiling!
consultation, 2 x-rays
and an oral exam...
No Charge

an \$35 value at no charge with this ad...
hurry offer expires 2/28/91 by appointment only

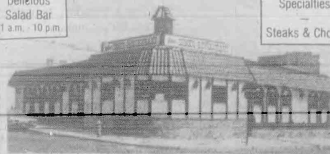
Smile Today

James D. Muglia, DDS, PA, FAGD
Family • Cosmetic • Restorative Dentistry
24 Hour Emergency Service

10 Franklin Avenue • Nutley
Dial "NO PAINO" (667-2466)

WILLIE'S Diner - Restaurant

Try Our Delicious Salad Bar 11 a.m. - 10 p.m. Italian Specialties Steaks & Chops



Homemade Pastries • All Baking Done On Premises
CHILDREN'S MENU AVAILABLE
Complete Dinner Menu & Ala Carte
Special Breakfast Menu 6 a.m. - 11 a.m.
Daily Businessman's Lunch 11 a.m. - 3 p.m.

OPEN 24 HOURS - 7 DAYS

9 State St. Bloomfield • 748-7414

Liam Nelson For Hair

Wednesday Hair & Nail Specials

PERM CUT & BLOW DRY \$50.00

REG. \$80

MANICURE & PEDICURE \$22.00

REG. \$32

MANICURE \$7.00

REG. \$10

162 Chestnut Street, Nutley
661-0750

Four Ways You'll Save at Grand Union!

1. Everyday Low Prices!
2. Red Dot Specials!
3. Unadvertised Red Dot Specials!
4. Super Coupons!

354 MAIN AND JORALEMON AVE., BELLEVILLE • OPEN 24 HOURS • STORE DIAL 759-1750

Low in Sodium
**Sweet and Juicy
Florida Oranges**

4-Lb.
Bag

1.99 ●

U.S.D.A. Choice Fresh
Ultra Trim American

**Oven Ready
Leg of Lamb**

Whole
or Butt
Portion

Lb. **1.79** ●

Super **GRAND UNION** Coupon

(603)

Premium

**Plumrose
Sliced Bacon**

One
1-Lb. Pkg.

1.29 ●

No Minimum Purchase Required With This Coupon. Good Feb. 24 Thru Mar. 3. Limit One Coupon Per Family.

Pre-Basted - with Ribs
5 to 7-Lbs. Frozen

**Grade 'A'
Turkey Breast**

Lb.

99¢ ●

The Natural Snack

**Seedless Red
or White Grapes**

Lb.

99¢ ●

Super **GRAND UNION** Coupon

(605)

Not From Concentrate
Regular or Homestyle Orange Juice

**Tropicana
Pure Premium**

One
Half Gal.
Carton

1.89 ●

No Minimum Purchase Required With This Coupon. Good Feb. 24 Thru Mar. 3. Limit One Coupon Per Family.

Regular or Light Neufchatel

**Philadelphia
Cream Cheese**

8-oz.
Box

99¢ ●

Fancy Solid Pack - In Water or Oil

**Bumble Bee
White Tuna**

6.5-oz.
Can

99¢ ●

Super **GRAND UNION** Coupon

(606)

Regular or Diet Mt. Dew, Lemon or Orange Slice, Plain or Raspberry Schweppes Ginger Ale, Mug Root Beer or Cream Soda or Regular or Caffeine Free

**Pepsi-Cola
or Diet Pepsi**

One
2-Liter
Btl.

99¢ ●

No Minimum Purchase Required With This Coupon. Good Feb. 24 Thru Mar. 3. Limit One Coupon Per Family.

Designer, White or Assorted Colors

**Viva
Paper Towels**

77
Sheet
Roll

69¢ ●

Assorted Flavors

**Hi-C Fruit
Drink 3-Pack**

Three
8.4-oz.
Conts.

69¢ ●

Grain Fed Ultra Trim Loin Center Cut

**Boneless
Pork Loin**

Whole
or Half

Lb. **3.89** ●

U.S.D.A. Choice
Fresh Ultra Trim American

**Shoulder
Lamb Chops**

Blade
Bone

1.99 ●

Marval - Fruited & Glazed

**Baked
Turkey Breast**

Half
Lb.

2.99 ●

**Bravo
Cheese Pizza**

13.5-oz.
Box

1.39 ●

GRAND UNION

Not Responsible for Typographical Errors. We Reserve The Right To Limit Quantities. For Consumer Information or Assistance, Call Toll Free, 1-800-221-1835. Prices and Offers Effective MONDAY, FEB. 25 thru SUNDAY, MAR. 3, 1991.

Belleville Times SPORTS

BUC SHOTS

By Mike Lamberti



After posting a 15-10 record in 1987-88, the Belleville boys' basketball team began a rebuilding process. Don Roll's club fell to 5-19 in 1988-89, then tumbled further the following season, finishing the year at 2-20. This season, the fortunes took a sharp turn in the right direction, as the varsity team won nine games and improved 6 1/2 games over last season's record.

Roll is quite optimistic about next season for two reasons. Three of the five starters from the varsity are back next year, including the three leading scorers on this year's team, Troy Talmadge, Dennis DeWork and Sal Straface.

The other reason for optimism is the play of the JV team this winter. Coached by Jim Sickinger, the Bucs were 7-10 heading into the final week of the season. More importantly, the team has improved steadily since a slow start. Before a four point loss to Hackensack, Sickinger's team had won three of its last four games and six of its last nine.

"We've been playing very well of late," Sickinger said. "The most important thing is that we've been competitive in every outing. We started out slowly, but now that the kids have the experience of playing together, there is a lot of potential for the future."

Of course, junior varsity is the final step before, hopefully, a shot at the varsity level.

"It's going to be tough next year," Sickinger said. "Three starters are back, so there should be plenty of competition for the positions. That isn't to say that the first three spots are a lock, but the returning starters have a lot of experience."

The Bucs started out very slowly this year, losing its first three games and six of its first seven.

Many of those losses were one sided, including a 25 point loss to Ridgewood, an 18 point defeat to Hackensack and a 21 point loss against Teaneck.

Belleville's only win in the first seven games was against Nutley, 51-37 in late December. The team then got on track in mid January when it won two straight over Paramus 47-33 and Don Bosco 59-47.

After an eight point loss to Nutley, the Bucs beat Paramus Catholic 56-41. Belleville won an eight point decision to a good Teaneck squad, then won two straight against St. Al's, 77-52 and St. Joe's, 57-53. The Bucs dropped a four point decision to Bloomfield, then edged Paramus, 48-44.

The teams most recent defeat was a 69-65 loss to powerful Hackensack. Although it's a loss in the books, Sickinger was pleased with the effort.

"That was a good game for us because Hackensack is undefeated and a top seed in its tournament. They're front line was 6'4" and 6'5". We don't have any kids bigger than 5'11". We played them right down to the wire."

In the second game with Teaneck, Belleville trailed by 18 at the half, when Sickinger made wholesale changes in the lineup.

"We didn't have anything going," the coach said, "so I put in five new players and they staged a big comeback. We ended up losing by eight, but we had the lead out to four at one point."

In that game, Mike Mundy scored 17 points, all in the second half, to help spur that comeback.

The starting lineup for most of the season has featured Mike Kimball and Michael Vista at the guard positions, Anthony Parzanese and Kevin Johansen at forward and Frank Means, a freshman, playing center.

The JV lineups are subject to fluctuation, depending on Roll's needs for the varsity. Thus, Sickinger doesn't have the luxury of a set lineup in every game.

Other key players on the team include guards Bryant Jiminez, Matt Kastner, Teddy Rayne and Mike Puleo. Mundy has done well at forward and Ken Johansen has seen time as a center.

Johansen and Jiminez have also seen extended time on the varsity, so their JV time is sometimes held back.

Some of the top scorers this season have been Vista, Ken and Kevin Johansen and Jiminez.

Vista had 19 point games against St. Joe's and Paramus Catholic. He scored 14 in the victory over St. Al's.

Jiminez scored 20 in the Hackensack game and tallied 19 in the Bloomfield contest.

Kevin Johansen had 14 in the Don Bosco game, 13 versus St. Joe's and 12 in the Paramus Catholic game. Ken Johansen scored 18 in the Don Bosco game. Kimball had his best offensive game against Hackensack, scoring 14. Parzanese also did well against Hackensack, scoring 10.

"The kids have a strong will to win," Sickinger said. "They're anxious to earn a varsity spot next year and the competition for jobs will be tough. If they keep on playing throughout the summer, it could be quite interesting next season."

1,000 POINT SCORERS

As mentioned last week, we are beginning a feature on 1,000 point scorers in Belleville men's basketball history. We begin this week with a look back at the first Belleville player to attain the 1,000 point mark, Abdel Anderson.

Abdel reached the 1,000 point plateau on January 7, 1975 in a game at Belleville High School against Orange High. It was quite an accomplishment because back in the 70's, freshmen were not allowed to play varsity ball, so Abdel's accomplishments were in three years of play.

I remember that Belleville-Orange game very well. The Bellboys came into the contest with a 4-3 record and the team had not beaten Orange in at least 12 years, maybe longer.

Early on, it didn't look too promising as the Tornadoes, a long time Big 10 rival, led after one quarter and again at halftime. But, in the second half, Abdel went on a tear, scoring points from all over the floor and the Bellboys went on to a 78-63 victory. Late in the fourth quarter, Anderson nailed a jumper from the corner to reach the 1,000 point mark. Since the point came late in the game, the contest was not stopped and Abdel had to wait until the next game to be presented with the ball.

I'll never forget that next game. It was a Friday evening, and the gym was absolutely packed. Montclair was the opponent in the what would be another Big 10 war and before the opening tip off, then Athletic Director Herman "Jitty" Wische presented Abdel with the ball. The crowd responded with a thunderous ovation which

(continued on page 10)

Bucs finish second in districts

Hywel captures third title

By Joe Piegara

Belleville High School's six year reign as District 7 champion was ended this past Saturday by State Parochial B champ St. Benedict's Prep. The Gray Bees' point total of 220 easily outdistanced the Bucs' 196 1/2 points. The remainder of the eleven team field finished in this order: No. 3 Bloomfield, 102; No. 4 Nutley, 69 1/2; No. 5 Kearny, 69; No. 6 Glen Ridge, 56; No. 7 Harrison, 48; No. 8 Essex Catholic, 37; No. 10 Montclair Immaculate, 12; No. 10 Barringer, 9; and No. 11 Newark East Side, 0.

On an individual basis, the districts was all Belleville affairs. The Bucs had six individual champs, while St. Benedict's had four. Bloomfield, Glen Ridge and Nutley each had one champion. Head to head with St. Benedict's, Belleville won five out of nine bouts, but the recent lack of depth prevalent in BHS teams proved to be the team's downfall. Coach Joe Nivoccia had no room to maneuver and could only watch as St. Benedict's won a medal in each of the weight classes which had the Bucs at a disadvantage.

Belleville had no entry at 189 pounds, a class dominated by St. Benedict's champion Kenya Moncur. At 171 pounds, Belleville sent

out Jimmy Mastropolo, in reality a legitimate 152 pounder. Jimmy lost a 10-9 decision to Mark Archer in the opening round, while Anthony Ballard of St. Benedict's breezed to a gold medal. Finally, Allan Cruz led in the first round to eventual bronze medalist Mark Lee of St. Benedict's by a fall. Cruz is another boy wrestling out of class as he is a 135 pounder by trade, but was forced to move up to 152 pounds to fill an open slot in the lineup.

St. Benedict's really won the tournament in the preliminary rounds as they advanced 12 of 13 boys into the semifinals and nine into the finals. All three Gray Bees won their respective consolation bouts, forging the bulk of the 23 1/2 point final margin of victory.

On this particular day in District 7, Belleville clearly had the most individual stars, but St. Benedict's was clearly the better team. In a year which saw the Gray Bees win their third straight Parochial B championship and the Essex County title, it was only fitting their season should end with a District 7 first place finish.

Belleville had six individual champs: Mike Conte at 112, Junior Nardone at 125, Carlo Ritracco at 135, Vinnie DeSimone at 140, Lee Hands at 145 and Danny Hywel at

160. The Bucs added three second place finishers, Josh Cardinale at 103, Tom Pontrella at 119 and Mike Miele at 130. George Wallace finished fourth, while Cruz and Mastropolo as mentioned earlier, were eliminated in preliminary action.

To emphasize the individual achievements of the Buc squad, Lee Hands was voted the Co-Outstanding Wrestler of the tournament. He shared the award with Steve Grober, Glen Ridge's upset winner at 152 pounds.

Lee opened his guest for a second District 7 crown pinning Sergio Pettelin of Harrison in only 45 seconds. Lee then followed that win with a pin at 5:59 over Mark Colalillo of Nutley in the semifinals. In the championship round, Hands easily handled Rory Walker-Graham of Essex Catholic, 13-6. The final round matchup was expected to be a classic, but it never materialized as the Buc co-captain dominated the bout in every aspect of wrestling, take downs, escapes, pinning combinations.

Also winning a second consecutive District title was 140 pounder Vinnie DeSimone. The tournament was a breeze up until the finals as Vinnie pinned Ralph Yanzuzelli of Nutley in 3:25 of the second period, then decked Jesus

Muniz of Harrison at 3:37 of the bout. Brian O'Donnell of Kearny pushed DeSimone to the limit in the finals, but Vinnie earned a tough 10-8 decision in a tightly contested matchup.

Junior Nardone was another Buc grappler to earn a second District 7 crown as he laughed his way to the gold medal at 125 pounds. A pin in the quarter-finals over Nish Shah of Montclair Immaculate took only 1:15. That was followed by a fall over Anthony Bellucci of Nutley in a scant 1:37. The finals saw Junior overhurl Cesar Bustamante by a score of 14-0. What made the finals most impressive were two points: 1) Bustamante was undefeated in dual meets for the entire season and 2) it was obvious by the reactions of the fans and the coaches that Bustamante's primary goal in this match was not to win, but to avoid being pinned.

Belleville also had a three time District champ this year, and that was Danny Hywel. Although in terms of execution it was not one of Danny's best, he still dominated all three of his opponents. A fall over Sean Corcoran of Glen Ridge at 5:05 was preceded by a fall over Eric Turner of Essex Catholic at

(continued on page 12)

DuHaime 19 lead Bucs by Morris Hills

By Mike Lamberti

All winter long, Jim DuHaime has assumed the role of hard nosed rebounder and relentless worker for the Belleville boys' basketball team. It's a role that is well appreciated by teammates but is not often noticed in the more glamorous world of headlines.

Last Saturday, in his season finale, DuHaime managed to fulfill both roles, scoring 19 points to lead the Bucs to a 70-66 win over Morris Hills. That victory closed the books on a 9-4 season for Don Roll's team. Earlier in the week, the Bucs lost interconference games to Montclair, 63-48 and Clifton, 75-61.

Next week, we'll wrap up the 1990-91 season.

The nine victories for Belleville were the most by the boys' program since the 1987-88 club posted a 15-10 record.

"The kids worked hard this year," Roll said after the tough game with Morris Hills which snapped a four game Belleville losing streak. "They won nine and I look at those four games we lost by one point and know we came very close to a winning season."

All four of those losses came at the hands of conference foes and two of them were in the span of one week, in late January. Nonetheless, the Bucs can look back at the year with optimism and know that a majority of this year's players will be back next season.

As for last Saturday's game with Morris Hills, Belleville looked very strong in the first three quarters.

The Bucs led 20-15 after one and 40-26 at halftime. The lead ballooned to 59-42 after three quarters and at one time in the fourth, it was 19 points.

However, Morris Hills would not give up and staged a furious rally in the last 6:30 that cut the lead to as little as four points with 1:27 left.

"We don't do things easily, you know that," Roll said afterward. "We get into trouble when we lose concentration. The kids seemed to think they were in control in the fourth quarter and let up. We (the coaching staff) told them that Morris Hills wasn't going to quit. I guess our team had to find that out for themselves."

That learning experience almost proved to be too painful for the Bucs. But Belleville regrouped and held on for the victory in the last minute of regulation time.

DuHaime and Troy Talmadge led Belleville with 19 points each. Dennis DeWork scored 16, Sal Straface finished with 11, senior Art Caruso scored three and Bryant Jiminez closed out the scoring with two points.

Talmadge, DeWork, Straface and Jiminez are among the players who will be back next winter. Talmadge, a junior, was the Bucs' leading scorer this season while DeWork, a sophomore, was second in that category.

Last Thursday, Belleville traveled to Clifton and lost a 75-61 decision. This game was basically

(continued on page 10)



Buc's Jim DuHaime goes up for two points during last Saturday's game with Morris Hills. DuHaime scored 19 points in Buc victory in season finale. (Photo by Michele Suchomel)

Mannion excels in loss to Bloomfield

By Mike Lamberti

Chances are, when Karen Fuccello looked at the 1990-91 girls' basketball schedule back in October, she knew the final week of the regular season was going to be a challenge, to say the least.

Powerful Paterson Kennedy was the on the schedule, along with a solid team from Bloomfield High. Combined, those two teams had won three state championships, one Tournament of Champions crown, five sectional championships, five county titles and three conference crowns over the past three years. Oh, and this year Kennedy is the number one ranked team in New Jersey, not to mention a ranked team nationally while Bloomfield has a good shot at winning a Group IV, Section II title this year.

Thus, Belleville, a young team on the rebuilding path, found the going a little rough last week. The Lady Bucs lost to Kennedy, 70-17 and Bloomfield, 60-27 to finish out the 1990-91 season. Belleville did show marked improvement over last year, posting a 5-18 record. The girls also won two games in the

NNJIL Pacific Division, beating Paramus and Hackensack.

Next week, we'll wrap up the 1990-91 campaign.

Against Kennedy, a team with awesome numbers the past four years, the results were pretty much expected. Kennedy led 19-5 after one quarter and 39-11 at halftime. It was 58-13 after three, with Kennedy eventually coasting to victory.

"They're just a solid team with so much speed and talent," Fuccello said. "They don't lose very often, that's for sure."

Kennedy went undefeated in the state of New Jersey last season, capping the year by winning the second Tournament of Champions crown. It lost two games in an out of state holiday tournament. In 1988-89, the Lady Knights were undefeated until Bloomfield pulled a stunning upset in the state semi finals at Belleville High. In 1987-88, Kennedy posted an undefeated record and won the Group IV title.

Ridgewood defeated Kennedy once this year, with Kennedy returning the favor a few weeks later. Over the past four seasons, includ-

ing this year's team, Paterson Kennedy has put together a record of 101-4. As mentioned, two of those losses came to teams outside of New Jersey.

Jennifer Abrams led Belleville in the Kennedy game with eight points. Colleen Mannion had five and Yanina Calvi and Danielle DeWork scored two each.

Versus Bloomfield, Mannion, a sophomore, played perhaps her best game of the season, scoring 15 points.

"Colleen played a really good game," Fuccello said. "She saw the entire court. She's starting to learn the game as a player. It was very encouraging."

Bloomfield, which doesn't have as good a record as Kennedy over the past four years but can boast some fine accomplishments, pulled away early in the Belleville game. It led 14-3 after one and 25-11 at halftime. The Lady Bengals put to rest any chance of an upset by outscoring Belleville 16-3 in the third quarter to assume a 41-14 lead.

The Lady Bengals have struggled a little this year, but they are considered one of the favorites in

the Group IV, Section II title run, which begins this week. Bloomfield won three straight sectional crowns from 1987-89 and captured the county championship in 1988 and '89. In '89, Bloomfield won that memorable game from Kennedy, snapping a 57 game Kennedy winning streak. Bloomfield then went on to the Group IV championship and was named the top seed for the first Tournament of Champions competition.

After drawing a bye in the first round of the TOC, Bloomfield's dream season ended with a loss to Union Catholic in the semi final round.

"Both of those teams have established outstanding programs," Fuccello said. "Our kids need to know the amount of work needed to get to that level. It doesn't happen overnight."

Indeed, there was a time not too long ago when Belleville prevailed regularly over Bloomfield and Paterson Kennedy. If the girls continue to work hard and dedicate themselves to the game, that time could return one day.

RECREATION ROUNDUP

Attention all Teachers!

The Belleville Recreation Department announces that applications for Summer Recreation positions are now available.

Playground director positions are open to teachers and those who will have completed their third year of college by summer 1991.

Preference is given to full-time teachers and college seniors majoring in recreation, physical education, teaching and psychology. Previous leadership in recreation settings and/or outstanding athletic ability is a plus.

Applicants must also have good organizational skills. There will be few positions open and person desiring summer employment are urged to apply promptly.

Persons wishing to apply should phone the Recreation Department office at 450-3422 weekdays for applications. Interviews will be scheduled in the Springtime. Potential applicants must be teachers or college students working toward a teaching degree and must be available for seven, straight weeks, from June 24 to Aug. 9.

All returning employees who qualify must also re-apply.

League director needed

The Belleville Department of Recreation & Cultural Affairs is seeking one or two adult men to serve as league directors for Spring and Fall sports. A man or woman is needed for our girls' softball league. The part-time positions entail supervision of league games, personnel, assigning umpires/referees, re-scheduling rainouts, writing press releases and chartering player participation records.

Anyone interested must reside in Belleville and be available five nights a week and Saturdays. Qualified applicants must be sport-minded, responsible and must work well with people. These positions would also be good experience for a college student majoring in recreation/physical education. For further information or to apply, please contact the Recreation Department at 450-3422.

Pre-school registration

The Belleville Department of Recreation & Cultural Affairs is accepting registration for the pre-school play program for 4 year old children. The program consists of games, stories, songs, art, outside play when weather permits, short rest periods and occasional holiday parties especially designed for pre-school children.

A session is from 9 a.m. to 11 a.m. five days a week with class limited to 23 students. The cost of the 32 week season is \$100. The mothers of the children accepted must participate by serving one duty day about every 8 or 9 days according to a published schedule.

School will begin on Monday, September 16, 1991 under the leadership of Mary Anne Lopreato, and will run through May 1992.

Children born between October 1986 - September 1987 who will enter kindergarten in September 1992 are eligible. Participants must be Belleville residents. Since there are just a limited number of openings, applications will be accepted on a first come - first served basis only.

For further information and enrollment, contact the Belleville Recreation Department at 450-3422 as soon as possible - Monday-Friday 8:30 a.m. to 4 p.m.

A.S.A. umpire tests

The Belleville A.S.A. Umpire's Association will be conducting the A.S.A. Softball Umpire's Test on April 15 at 7 p.m. at the Rec House, 407 Joralemon St. Any adult, male or female, interested in taking the test should call the Belleville Recreation Department at 450-3422 to obtain an application. A \$20 non-refundable exam fee must accompany each application.

Persons who register for the test can attend the A.S.A. Softball Rules Clinics, 6:30 p.m. March 19, March 26 and April 2 at the Belleville Recreation Department. These clinics are designed to prepare all potential umpires for the test on April 15. The clinics will be conducted by Frank C. Ameo, Belleville's Umpire-in-Chief.

Registration deadline is March 22. The course and test are open to all persons 18 years of age and older. A 70% passing grade will be required. Successful applicants will then be qualified to umpire A.S.A. softball after paying membership dues and will be responsible for securing their own work assignments.

Coaches needed

The Belleville Department of Recreation and Cultural Affairs is seeking coaches for its Boys' baseball and Girls' softball leagues. Men or women interested in coaching a baseball or softball team in youth leagues for ages 8 through 14 are urged to contact the Recreation Department at 450-3422 as soon as possible.

Sportsmanship, basic skills and fun are the objectives of the leagues. Every player on each team who attends required practices will play in every game. Come volunteer your time and share your interest and knowledge with the youngsters in town.

All potential coaches will be required to attend a training and certification course given by the Recreation Department.

Participants at these clinics will be given instructions on psychology of youth sports, first aid, maximizing performance and organization of practice, as well as tips on specific coaching techniques in the sports of baseball/softball. Participants will be certified by the National Youth Sports Coaches Association upon completion of the clinic. An attractive benefit afforded to all certified coaches is a \$500,000 liability insurance coverage. The clinics for first-year coaches will be held on March 4-5, and March 20-21.

For further information or to register, contact the Belleville Recreation Department at 450-3422, between 8:30-4:00, Monday through Friday.

Baseball/softball applications

The Belleville Recreation Department is proud to announce that applications for all Recreation baseball and softball programs are available in all public and parochial school offices and at the Recreation Department office.

Boys 8-9 can play Peanut League Baseball; 10-12 year old boys can play Junior League Baseball; and 13-15 year old boys are eligible for Senior League Baseball. Girls ages 8-14 can apply for all levels of Recreation softball, including the Suburban team. Specific league structure/breakdowns for girls' softball will be determined after the registration deadline. In order to qualify for any league, the child must reach the minimum age before Aug. 1, and he/she cannot exceed the maximum age by July 31.

High school freshmen or J.V. team players, or Suburban league team players (7th and 8th grade) are not eligible for the Rec.

leagues. All applications must be returned to the Rec. House with birth certificates by March 22. Players trying out for the previously mentioned teams should complete Rec. applications before the deadline in case they get cut.

In all cases, the applications must be completed in full and signed by a parent, and all returning players must re-apply. Applications accepted after the March 22 deadline will be considered late and will be treated accordingly. Late applications cannot be guaranteed entry into the league. The Rec. House (407 Joralemon Street) hours for registration are Monday-Friday, 8:30 a.m. - 12 noon and 1:00 - 4:00 p.m. Beginning Feb. 20, the office will also be open Wednesdays from 6 to 7:30 p.m. for registration. All children attending required practices will play in every game.

Bucs finish year with 9-14 record

(continued from page 9)

decided in the first eight minutes, as the Mustangs jumped out to a 24-6 lead. The Bucs chipped away in the second quarter and trailed 36-24 at halftime.

The second half was pretty much even, with Clifton outscoring Belleville by one point in the third and fourth quarters to win by the 14 point margin.

Talmadge played a superb game for the Bucs, scoring 26 points. DeWort and Straface had ten each, John Sipp and DuHaine scored six each and Jimenez had three.

In the Montclair game, the Bucs were hurt by a bad fourth quarter. The game started out as an offensive show, with Montclair jumping out to a 25-19 lead after the first quarter. Belleville came back to cut the lead to 38-36 at halftime.

"We were right there," Roll said. "But we were flat in the second half and we let them control the tempo."

Although Belleville scored just seven points in the third quarter, it was still in the contest because Montclair countered with just eight. With the Bucs trailing 46-43 entering the fourth quarter, the game appeared to be a toss-up.

Montclair put the contest out of reach in the final eight minutes, outscoring Belleville 17-5 and winning by 15 points, 63-48.

Three bad quarters, the last two against Montclair and the first at Clifton, contributed to two defeats. The Bucs were outscored 49-18 in those frames and scored no more than seven points in any of those three quarters.

In the other five quarters that made up the Clifton and Montclair games, Belleville scored 19, 17, 18, 15 and 22 points. In those five quarters, the Bucs outscored its opponent by a 91-89 margin.

"When we concentrate, we can play just about anybody," Roll said. "When we don't we're not going to compete, it's as simple as that."

An up and down season is now in the books for the Belleville boys' basketball team. If the returning players do the necessary things during the off season, the 1991-92 campaign could be something special at Belleville High.



Cheerleading co-captain Michelle Pizzi is a picture of concentration during Buc basketball game last Saturday afternoon.

Buc Shots

(continued from page 9)

lasted at least four minutes.

Abdel was a hero at Belleville High School. At 6'7" tall, he towered over most of us and he was being recruited by most of the major universities. It was an exciting time for mens' basketball at BHS.

Belleville went on to a 13-10 regular season mark in '74-75. The team was invited to the prestigious Essex County tournament, where it lost to top seeded East Orange. Nonetheless, it was a big thing for the Bellboys to be invited to the ECT because only the top 16 teams in the county were extended invitations and Belleville hadn't been there in 15 years.

The coach of that team was Danny Grasso. Anderson scored nearly 1400 points in his career and his scoring mark stood for 13 years, until Ted Sochaski eclipsed the record in January of 1988. Ironically, Sochaski's scoring heroics also came in a season in which Belleville had a winning record. It was Belleville's first winning mark since Anderson's '75 club.

Anderson went on to Rutgers University, where he enjoyed a solid collegiate career. Abdel was a key player on the '75-76 Rutgers team that went all the way to the Final Four and won its first 31 games of the season. Anderson was a freshman on that team and he helped lead Rutgers to three more impressive seasons.

Looking For A Good Mechanic?

Guaranteed Auto Repair On All Work BRAKE SPECIALIST

OL' BETSY AUTO REPAIR

504 WASHINGTON AVE., BELLEVILLE

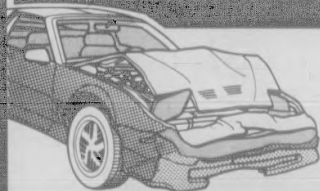
All Work Guaranteed 759-5561

OVER 30 YEARS EXPERIENCE

Snow Plowing N.J. Inspection

Just need some advice? Don't know where to turn? Stop in or call Tedd for some straight talk about your car problem.

CAR CRASHED?



MAACO—the insurance claims professionals—offers:

- Full collision services
- Timely service
- Free estimates
- Written guarantee

Let us work with your insurance company!

Complete Paint Services Start At

\$199.95 NUTLEY

Behind 67 E. Centre St.,
Btwn Washington Ave. & River Rd.
1-800-287-5522

Vans, trucks and commercial vehicles by estimate. Paint repair and bodywork extra.

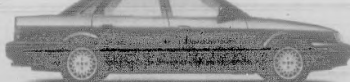
MAACO Auto Painting and Bodyworks are independent franchisees of MAACO Enterprises, Inc. Prices and hours may vary.

24 HOUR TOWING AVAILABLE

YOU COULD SAVE UP TO \$28,960 ON YOUR NEXT CAR.

Find another car with all the standard equipment of a 1991 Sterling 827 SL for \$28,960 (MSRP*) or less and Sterling will buy it for you.

Of course, after looking quite thoroughly themselves, Sterling doesn't think you'll find such a car. Just how sure are they? \$28,960 sure.



STERLING & ROVER

New And Used Sterlings At Our Famous Low Prices.

CITY MOTORS

6 Quick Minutes From Giants Stadium

777-1600

Route 3 to 21 North Exit 11A • Passaic Park

*Offer applies only to 1991 model year four door sedans certified for sale in the U.S. by comparing manufacturer's MSRP. All claims must be based on specified standard features and MSRP as of their date, exclusive of optional extras, license, registration, and insurance. See participating dealer for specifications, see date, and further details. Offer applicable from 10/4/90 to 1/31/91 and is limited to the first 800 valid claims received per car, not excess.

Stafford Tire Center

DUNLOP • TOYO • GOODYEAR

4 WHEEL ALIGNMENT SERVICE

FREE

Rotating & Tire Disposal

With Tire Purchase

With Coupon • Expires 5-15-91

FREE

Mounting & Valve

With Tire Purchase

With Coupon • Expires 5-15-91

FREE

High-Speed Balancing

With Tire Purchase

With Coupon • Expires 5-15-91

FREE

Flat Repair

With Coupon • Expires 5-15-91

\$20 OFF Any Set Of 4 Tires

\$10 OFF Any Pair Of Tires

With Coupon • Expires 5-15-91

\$10 OFF

Front End Wheel Alignment

With Coupon • Expires 5-15-91

FREE

Tire Rotation

(every 5,000 miles)

With Coupon • Expires 5-15-91

CALL FOR PRICES ON TIRES

552 Route 3 West

CLIFTON

779-0726

Cirino Guerrero, 63

A Mass for Cirino Frank Guerrero, 63, of Belleville was offered Feb. 22 in St. Peter's Church, Belleville, after the funeral from the S.W. Brown & Son Funeral Home, Nutley.

Mr. Guerrero died Feb. 19 in the Clara Maass Medical Center, Belleville.

He had been a mechanic for Westinghouse Electric for 43 years, working in Belleville and then in the Bloomfield division before retiring five years ago.

Mr. Guerrero served in the Navy during World War II. He was a member of the Westinghouse Veterans, Bloomfield. Born in Lyndhurst, Mr. Guerrero lived in Belleville and Lyndhurst before returning to Belleville 30 years ago.

Surviving are his wife, Helen; two daughters, Mrs. Denise Jimenez and Mrs. Donna Marie McPadden; a brother, Benny, and two grandchildren.

Caroline Laqualia, 70

A Mass for Mrs. Caroline Laqualia, 70, of Belleville was offered Feb. 22 in St. Francis Xavier Church, Newark, after the funeral from the Biondi Funeral Home, Nutley.

Mrs. Laqualia died Feb. 18 in the Clara Maass Medical Center, Belleville.

She was a member of the Senior

Citizens of St. Francis Xavier Church, Newark.

Born in Newark, she moved to Belleville 20 years ago.

Surviving are her husband, Frank; a daughter, Mrs. Mary Del-Guercio; a sister, Mrs. Anna Romano; six brothers, Carlo, John, Michael, Fred, Angelo and Frank Bottone, and three grandchildren.

Ida Bianchini, 82

Mrs. Ida Bianchini, 82, of Belleville died Feb. 22 in the Clara Maass Medical Center, Belleville.

A Mass was offered Feb. 25 in Holy Family Church, Nutley, after the funeral from the S.W. Brown & Son Funeral Home, Nutley.

Mrs. Bianchini was born in New-

ark and lived in East Orange before moving to Belleville 13 years ago.

Surviving are two sons, Joseph H. and Ralph M.; a brother, Victor Melchiorre; three sisters, Mrs. Yolanda Bianchini, Mrs. Mafalda Colombrino and Mrs. Raffaella Ramella, and two grandchildren.

Louise Christiano, 94

A Mass for Mrs. Louise Christiano, 94, formerly of Belleville, was offered Feb. 27 in St. Anthony's Church, Belleville, after the funeral from the LaMonica Memorial Home, Bloomfield.

Mrs. Christiano died Feb. 23 in Mountsinide Hospital, Glen Ridge.

She was a member of the Belleville Senior Citizens and the Essex

County Senior Citizens.

Born in Newark, she lived in Belleville for most of her life before moving to Bloomfield six years ago.

Surviving are four daughters, Mrs. Angelina Chance, Mrs. Marie Raymond, Mrs. Rae Koster and Mrs. Marion Berninger; a sister, Mrs. Nancy Valvano; 10 grandchildren and five great-grandchildren.

Antonio Scordo, 97

A Mass for Antonio Scordo, 97, of Belleville was offered today in St. Peter's Church, Belleville, after the funeral from the Megaro Memorial Home, Bloomfield.

Mr. Scordo, who died Feb. 24 in Mountsinide Hospital, Glen Ridge, had been a tile contractor in Newark and Belleville for many years before his retirement 30 years ago.

He was a member of the Belleville Senior Citizens.

Born in Italy, he lived in Newark before moving to Belleville 44 years ago.

Surviving are three sons, Joseph, Anthony and Fred; two daughters, Mrs. Mary Levesque and Nancy; nine grandchildren and six great-grandchildren.

Louis Cilli, 80

Memorial services for Louis Cilli, 80, of Belleville were offered Feb. 27 in the Zaro Funeral Home, Bloomfield.

Mr. Cilli died Feb. 24 in the Clara Maass Medical Center, Belleville.

Should I itemize my deductions?

Because itemizing your deductions can lower your tax bill, Bert Tobia, H & R Block District Manager of Clifton, suggests you should itemize if you can. You can benefit from itemizing if the total of your deductions is more than your standard deduction. Bert states that itemized deductions include expenses for:

- medical and dental care
- state and local real estate, income, and personal property taxes
- interest
- charitable contributions
- casualty or theft losses
- job related moves
- miscellaneous job, investment, and tax determination costs

Keep all of your receipts for deductible expenses! If you have any questions, feel free to contact your local Block office or call Bert at 365-0999.



Vincent Cozzarelli
Reg. Ph.

CARELESS CONTRACEPTION

It was revealed in a study conducted at The University of Michigan that the majority of women who use birth control pills are at risk for pregnancy because they do not follow instructions. In fact, the study points out that fewer than eleven percent of the subjects studied followed pill-taking directions correctly. The pill is to be taken within two hours of the same time each day, until every pill in the prescription package is gone. If a pill is missed, women are advised to utilize a backup method of birth control on the missed day. Despite these instructions, 54 percent of the women in the study reported that they missed taking a pill every day, and 40 percent admitted to not using a backup method on missed days.

Carefully read the instructions on all prescription medications before taking. If there is something you don't understand give us a call at 759-1956 or 759-1968. ROSSBACH PHARMACY, 338 Washington Ave. The sale and rental of contraceptive aids are handled. This includes walkers, wheel chairs, crutches and canes. Our column will feature many different topics concerning health and medications, in the upcoming weeks. Open: Daily 9am-10pm, Sundays 9am-9pm.

HINT: Fewer than 17 percent of the women surveyed in the above-mentioned study took their pills at the same time each day.

OBITUARIES

John J. Bellay, 81

Services for John J. Bellay, 81, formerly of Belleville, were held Feb. 22 in the Kiernan Funeral Home, Belleville.

Mr. Bellay died Feb. 19 in the Community Memorial Hospital, Toms River.

He had been in the merchant marine for 25 years, serving during World War II, the Korean Conflict and the Vietnam War before retiring in 1963.

He earlier had served in three branches of the military, the Army from 1930 to 1932, the Coast Guard the next two years and then four years in the Navy.

Born in Wallington, he lived in Belleville and in Seaside Park, living the last two years in Forked River.

Surviving is a sister, Mrs. Ann DiGiacomo.

Rosa Tuozzolo, 43

Services for Mrs. Rosa Tuozzolo, 43, of Nutley were held Feb. 20 in the Nutley Assembly of God following the funeral from the Megaro Memorial Home, Belleville.

Mrs. Tuozzolo died Feb. 16 in the Clara Maass Medical Center, Belleville.

Born in San Giuseppe, Palermo,

Italy, Mrs. Tuozzolo settled in Newark, and lived in Bloomfield and Belleville before moving to Nutley five years ago.

Surviving are her husband, William; her mother, Mrs. Lucia Albinielli; a daughter, Virginia A.; a son, Michael P., and three brothers, Rosario, Luigi and Vito Albinielli.

Ida DiPierdomenico, 91

Mrs. Ida DiPierdomenico, 91, formerly of Belleville, died Feb. 21 in the home of her son, Michael, in Harrison.

A Mass was offered Feb. 23 in St. Anthony's Church, East Newark, following the funeral from the Mulligan Funeral Home, Harrison.

Mrs. DiPierdomenico was a packager for the Charms Candy Co. in

Bloomfield for several years before retiring many years ago.

Born in Italy, she lived in Worcester, Mass., Newark, Belleville and Verona before moving to Harrison in 1980.

Also surviving are a daughter, Mrs. Filomena Grodome; six grandchildren and seven great-grandchildren.

Madeline Gembel, 86

Mrs. Madeline Gembel, 86, of West Caldwell died Feb. 24 in her home.

Services were held Feb. 27 in George VanTassel Community Funeral Home, Bloomfield.

Mrs. Gembel had been a nursing assistant for the Essex County Geriatric Center in Belleville for 27 years before retiring 10 years ago.

Born in Newark, she lived in Belleville and Bloomfield before moving to West Caldwell.

Surviving are two daughters, Mrs. Isabelle Stavella and Mrs. Gloria Molinar; a sister, Mrs. Edythe Ostermeir; four grandchildren and three great-grandchildren.

Jeraldo Maioran, 86

Jeraldo R. Maioran, 86, a lifelong resident of Belleville, died Feb. 24 in his home.

A Mass was offered today in St. Anthony's Church, Belleville, following the funeral from the Berardelli Forest Hill Memorial, Newark.

Mr. Maioran was an insurance representative for 40 years with the

Metropolitan Insurance Co. in Belleville, retiring 20 years ago.

He was graduated from the George Washington University School of Pharmacy in Washington, D.C., in 1933.

Surviving are his wife, Virginia, and two sisters, Mrs. Clementine Lally and Mrs. Betty Anselmo.

Mildred Maioran, 82

Services for Mrs. Mildred Maioran, 82, formerly of Belleville, were held Feb. 25 in the Allwood Funeral Home, Clifton.

Mrs. Maioran died Feb. 21 in the Passaic General Hospital Center. Born in Newark, she lived in Belleville before moving to Clifton

41 years ago.

Surviving are her husband, Amadio; three daughters, Mrs. Dolores Vander Kamp, Mrs. Marilyn Solanko and Judith Ann; a sister, Mrs. Yolanda Romano; two brothers, John and Leopold Luciano, and two grandchildren.

ADVERTISE!

Professional Service Directory



THE NUTLEY SUN, BELLEVILLE TIMES, BLOOMFIELD LIFE

Podiatrists

Dr. Marykate Noonan Doyle
Surgeon Podiatrist
Foot and Ankle Specialist
272 Holmes Street
BELLEVILLE
Call for Appt.
(201) 450-4070
Medicare and NJBS Participating Physician

Dr. Nicholas Pellicoro
Surgeon Podiatrist
FOOT SPECIALIST
526 Franklin Avenue
Nutley
667-1066
Medicare Participating Physician

Chiropractors

Dr. Robert J. LaBruzza
CHIROPRACTOR
• Auto Related Injuries
• Work Related Injuries
• Occupational Stress
• Back, Neck, Arm and Leg Pain
• Sports Related Injuries
• Permanent Impairment and Disability Evaluations
3 Edgewood Road
Bloomfield 429-2225
(Two blocks behind Bloomfield High School)

DR. RALPH J. DI MAIO
CHIROPRACTOR
Serving your community
for over 11 years
Most insurances provide coverage.
751-8805
625 Joralemon St., Belleville

Dentists

Dial "NO-PAINO"
(667-2466)
Smile Today
J. D. Muglia D.D.S., F.D.S., F.A.C.D.
10 Franklin Ave.
Nutley, NJ
24 Hr. Emergency Service

Cosmetic & Restorative
Dentistry
Smile Today
J. D. Muglia D.D.S., F.D.S., F.A.C.D.
10 Franklin Ave.
Nutley, NJ
24 Hr. Emergency Service

Dentists

Vincent J. Lipoma
D.M.D.
General Dentistry
30 HUCK ROAD
BLOOMFIELD, N.J.
338-1120
Evening and Saturday Hours Available

Attorneys

Deborah C. Peck
ATTORNEY AT LAW
General Practice:
• Matrimonial • Bankruptcy
• Wills • Accidents
FREE CONSULTATION
CLIFTON EXECUTIVE PLAZA
1200 ROUTE 46 WEST
CLIFTON, N.J. 471-1184

Welcome To Our New Office

Fred Appelbaum, D.D.S.

Pediatric Dentistry For
Infants, Children and Adolescents

Saturday Hours Available

502 Franklin Ave., Nutley 667-5507

Pain Specialist

PAIN CLINIC
Specialist in Pain Management
Treating Pain Conditions
with New Method
Headache Arthritis
Neckpain Sprains
Back Pain Leg & Arm Pain
Shan Nagendra, MD
(Dr. Franklin Datta's of Nutley)
460 Franklin Ave. Nutley
For Appointment Call
667-8640

This Space
Is Available
For Your
Professional
Advertising

Obstetrics / Gynecology

NUTLEY KEARNY
OBSTETRICS GYNECOLOGY
HOWARD GRODER, M.D.
JEFFREY ROSEN, M.D.
HIGH RISK PREGNANCY
INFERTILITY
Nutley Medical Plaza
181 Franklin Avenue
Nutley, N.J. 07110
667-2212
Arlington Medical Building
837 Kearny Avenue
Kearny, N.J. 07032
991-1519
"Serving The Community For 10 Years"

For more information call **667-2100**

Trine Cozzarelli Memorial Home

IN YOUR TIME OF NEED
"A Family Name You Can Trust"



James J. Cozzarelli, Jr.
Owner/Manager

276 Washington Avenue
BELLEVILLE
759-1114

THERE'S NO PLACE LIKE HOME

180 Centre St.
Nutley, N.J. 07110
667-3440

GEORGE E. MACMUNN CO.
REALTORS

100 Woodport Road
Sparta, N.J. 07871
729-8727



OPEN HOUSE - SUNDAY - 1-4 PM - NUTLEY, 267 RUTGERS PL. (Off Passaic Ave.) Center hall colonial in heart of Nutley Park. 4 BR's, 1 1/2 baths, ultra mod kit, 25x12 P.m. Rm. overlooking rear yard & lovely deck, 2 car gar plus much more. ASKING \$279,900.



OPEN HOUSE - SUNDAY - 1-4 PM - NUTLEY, 90 GLENDALE ST. (Off Franklin Ave.) 1 Blk North of Kingsland) Yantacaw School area, lovely quiet area yet close to everything, 3 BR's, 1 1/2 baths, maint. free exterior, natural trim, 1 car garage. ASKING \$166,500.

**DO YOU KNOW
WHAT YOUR
HOUSE IS
WORTH
TODAY?**

We offer a current market
value analysis...
Just pick up the phone & call.



NUTLEY - RANCH IN SPRING GARDEN - Living Rm. w/fpl, DR, mod kit & bath, 2 BR's, side enclosed porch, 2 car det gar, alum. exterior, 72x129 landscaped prop. ASKING \$169,900. OFFERS CONSIDERED!!

Too New For Photo



SPARTA - JUST LISTED - ASKING \$149,900. Bring the kids, private lake community - 4 BR's (1 queen size), 2 full mod baths, Fam. Rm., LR w/fpl & beamed ceiling, 2 car gar. Taxes only \$2,471. Terrific condition!!

Local Century 21 brokers join peers at Corporate retreat

Bruno Marino and John A. Gomez, Brokers-Owners of Century 21 Homes Thru Us, Inc., participated in a unique two-day management conference held recently at the Sheraton Crossroads in Mahwah. Sponsored by the Century 21 organization, the event was attended by several hundred real estate executives from New York, New Jersey, Connecticut and Rhode Island.

In addition to presentations by guest speakers on a number of timely management topics, the session provided ample opportunity for exchange of ideas — in roundtable discussions and informal conversation.

"In today's challenging real estate climate, it is essential to take time to learn and grow," commented

John A. Gomez upon his return. "Sessions like these allow me to step back from everyday problems and to share ideas with some of the sharpest business minds in the country."

"This retreat afforded me the opportunity to step away from the daily problems of running a real estate firm and to look at the bigger picture," commented Bruno Marino upon his return. "Sharing ideas with some of the brightest minds in the business is a great way to sharpen my skills."

Century 21, a wholly owned subsidiary of MetLife, is the world's largest real estate organization, composed of more than 700 independently owned and operated offices in North America, Europe, Australia and the Pacific Rim.

THE PRICES ARE RIGHT

NUTLEY
4 bedrooms, 2 1/2 baths, family room on first. Lovely Colonial in Spring Garden section.

ALSO
Maintenance free Colonial with new kitchen, finished basement, deep lot. One of Spring Garden's finest.

BLOOMFIELD
BOTH IN BROOKDALE
Just reduced to \$172,500. 7 rooms, 2 full baths, rear glass enclosed porch.

ALSO
At \$169,000 this immaculate 3 bedroom, 2 bath home plus family room will be the next to go.

EVERYONE KNOWS

GEORGE T. BOWES
YOUR NUTLEY REALTOR SINCE 1933
681 FRANKLIN AVE. NUTLEY 067-3370

Century 21 Stanford Agency

TWO FAMILY
Reduced for quick sale.
Four rooms over four
rooms. Great rents.
Separate heat. Owner anxious.
BELLEVILLE \$169,900

HURRY!
This newly listed cape cod
in great area won't last!
Features include 3
bedrooms, formal dining
room, recently remodeled
out-in kitchen, screened
porch and more.
BELLEVILLE \$145,000

OPEN HOUSE
470 Belleville Ave.
1-4pm - March 3
Spectacular 3 bedroom col-
onial with rec room, sun
room, 1 1/2 baths overlook-
ing golf course. A must see!
BELLEVILLE \$179,000

WHITE OAK BEAUTY
Spacious colonial with
Florida room, formal dining
room, aluminum siding,
garage and more. Call for a
list of additional features. A
real buy at...
BELLEVILLE \$159,000

MINI MANHATTAN
Three beautiful bedrooms.
Formal dining room,
fireplace, lg eat-in kitchen,
2 full baths, finished bas-
ement with wet bar, 2 car
garage. Move right in.
BELLEVILLE

BARBARIAN
Living room, formal dining
room, eat-in kitchen, sun
parlor, 2 bedrooms, garage,
all for only...
BELLEVILLE \$129,000!
Hurry!

Century 21
STANFORD AGENCY

86 Union Ave.
Nutley, N.J.
235-9000

EACH OFFICE INDEPENDENTLY OWNED AND OPERATED



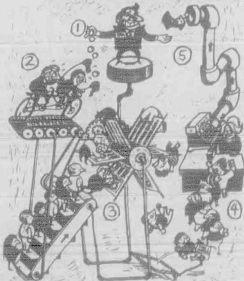
EQUAL PROFESSIONAL SERVICE

- in the sale or rental of housing
- in advertising the sale or rental of housing
- in standing ready to enter broker-client relationships
- in the providing of real estate brokerage services

WE SUBSCRIBE to the policy that equal opportunity in the acquisition of housing can best be accomplished through leadership, example, education and the mutual cooperation of the real estate industry and the public.

BLOOMFIELD, GLEN RIDGE, NUTLEY & BELLEVILLE
BOARD OF REALTORS
375 Broad Street
Bloomfield, N.J. 07003
(201) 743-5114

The Advertising Machine



How advertising really works: 1) Sam the retailer pays the newspaper ad rep who 2) gets the advertising to the reader who 3) reads Sam's ad and thus are sent to Sam's store to buy some goods.

If you wish to reap the
rewards, just as Sam has, call
your advertising representative
today at 667-2700!

ORECHIO PUBLICATIONS & TV

The Home Front

By Nina Kaeser



Moldings can add personality and decorating style to a room. Different shapes are available to create a chair rail, frame a mantelpiece, or create an elegant, custom-made finish where an ordinary wall meets an ordinary ceiling.

Outdoor carpeting was the rage some years ago, and many folks who installed it then are removing it now to find old glue stuck to floors and decks. Best bet to remove it is to rent a big drum-type sander; scrape off lumps of glue with a stiff putty knife first.

Water-saving devices can help save money on utility bills — and save the environment, too — without inconveniencing the user. Low-flow shower heads and sink aerators restrict water flow, yet increased pressure provides volume. Ultra-low-flush toilets help, too.

Update old furniture with new fabric. Crisp geometrics — stripes, checks and plaids — look good with any style and provide a counterpoint to florals.

Updating your lifestyle and moving on? For expert marketing of your old house, list with the real estate pros — Century 21 Stanford Agency, 86 Union Ave., Nutley, 235-9000.

BELLEVILLE



DON'T MISS OUT on this great starter home, priced at \$129,000.00. 2 BR's, LR with fireplace, eat-in kitchen, and much more. Call for details.

DON'T DELAY
CALL TODAY ASK FOR LOUIE

Century 21
STANFORD AGENCY

86 Union Ave.
Nutley, N.J.
235-9000

667-3000



HOBBIES & CRAFTS

**CONDOS
FOR SALE**

TANFORD AGENCY
 235-9000
 Eves 680-8951 Marie
 Each office is
 independently owned and
 operated
**HOUSES
 FOR SALE**
 LLEVILLE
 3 BR COLONIAL
 with frpl, FDR, EIK,
 bsmt, 2 car garage. A
 must see! Reduced
 19,900.
 CENTURY 21
 TANFORD AGENCY
 86 Union Avenue
 Itew 235-9000

NEW LISTING
FAM CAPE - 4 & 3, gar,
quiet street, well kept
me. \$170,000. Eves call
lane, 667-9328, or
REALTOR:
RECORDS REALTY
3 High St., Nutley
667-5522

CLLEVILLE
ALL OFFERS
CONSIDERED!
This 6 1/2 rm Col. is a
great buy. Mod kitc. with
breakfast nook, lg DR,
hvac. in LR, 3 BDRMs,
finished in yard. Asking
\$49,900. Call to see.
FORECLOSURE AGENCY

667-7733
Eves Mario 667-8183
FREE Brochure on
interfront homes in
Ocean County, Long
each Island to Little Egg
Harbor. Starting in the
\$s.
Call Zachariah Realty
toll free
1-800-633-1142

**BLOOMFIELD
OPEN HOUSES
(Sunday-03/03/91)
1-5 P.M.
SOUTH MOUNTAIN
E.**
arming three-bedroom
e offers bright, beauti-
kitchen, spacious living
m, formal dining &
venient location within

138 HADDON PL.
Delightful, sunny colonial
with deep, private yard &
charm of the 90's will entice
the young couple looking
for a choice Upper
Montclair location. Bonus

Top condition ready
"move-in" \$235,000
TC049-2445

177 ORANGE RD
Family life thrives in this
four-bedroom Victorian
private yard. Fireplace-
adorned windows/roof.
This beautifully main-
tained home is in "move-in
condition" and boasts

transportation-
venient" location.
55,800. MTC049-2276

ELSTON STREET
Affordable & Charming
natural woodwork,
hardwood flrs. make this
arter 3 bdrm home a
delight. Close to NYC
transp. Priced to Sell!
\$135,000 (049-2441) Dir-

19 BROMLEY PLACE
For Both Young & Old
Come with new family
room on 1st flr. New
kitchen & roof. 3 bdms
located in fine area. Good

17 WELLS COURT
\$39,900 in Brookdale
funny starter home in
mint cond. 3 bd rms,

Weichert Realtors

The American Dream Team

We Save You Money!...2nd Big Week...

1/2 PRICES SALE

With Coupon Below & Single \$15⁰⁰ Purchase



5-7 LBS. AVG. WITH POP-UP TIMER, FRESH
Perdue Oven Stuffer ROASTER
U.S.D.A. A GRADE
WITH COUPON
PRICE WITHOUT COUPON lb. .99
49
lb.

ShopRite Coupon
WITH THIS COUPON
ONE (1) 5-7 LBS. AVG. WITH POP-UP TIMER, FRESH
Perdue Oven Stuffer Roaster lb. **49**
WITH YOUR SINGLE \$15.00 OR MORE PURCHASE
(EXCLUDING ITEMS PROHIBITED BY LAW)
No Rainchecks will be issued for specific weights of Roaster. Limit one. Good at any ShopRite. Sun., Feb. 24 thru Sat., Mar. 2, 1991.

YOUR CHOICE
Smucker's Grape Jelly or Jam
1/2 PRICE
2-lb. jar **.99**

ALL TEMPERATURE, LIQUID
Purex Detergent
1/2 PRICE
1-gal. bot. **1.49**

WHY PAY MORE?
Armour Hot Dogs
1-lb. pkg. **.99**

WHOLE MILK OR PART SKIM
ShopRite Mozzarella
1/2 PRICE
8-oz. pkg. **.89**

15-CT. TALL KITCHEN BAGS OR
ShopRite Trash Bags
10-ct. box **.64**

ASSORTED PATTERNS
Scott or Viva Napkins
140-ct. pkg. **.49**

WHY PAY MORE?
DAK Sliced Bacon
1-lb. pkg. **1.44**

CLASSIC QUARTERS SPREAD
Country Crock
1-lb. pkg. **.44**

ASSORTED VARIETIES
3-Pk. Ssips Drinks
25.35-oz. 1-w. pkg. **.44**

CHICKEN NOODLE
Campbell's Soup
1-lb. 10-oz. can **.64**

ASSORTED VARIETIES
Buddig Sliced Meats
2 1/2-oz. pkg. **.34**

ASSORTED FLAVORS
La Yogurt Yogurt
6-oz. conts. **3.100**

ASST. VAR., MICROWAVE
Newman's Popcorn
10 1/2-oz. box **.99**

ASSORTED VARIETIES
King Size Nestle Bars
2.8-oz. bars **3.100**

STORE SLICED IN THE APPY (WATER ADDED)
Smoked Virginia Ham
1-lb. **2.49**

REG. OR W/ONIONS
Axelrod Sour Cream
16-oz. cont. **.74**

NEW LARGER SIZE NABISCO
Frosted Wheat Squares
1-lb. 4-oz. box **1.74**

ASST. VAR.
Viva Spaghetti Sauce
1-pt. 10-oz. jar **.79**

STORE SLICED IN THE APPY
Taylor Pork Roll
1-lb. **2.99**

LIGHT N' LIVELY
Cottage Cheese
24-oz. cont. **1.34**

REGULAR (WHERE AVAIL.)
ShopRite Pantyhose
pr. **.84**

ALL VAR. SHAMPOO OR CONDITIONER
Faberge Organics
15-oz. bot. **.84**

ShopRite 6-PACK
English Muffins
12-oz. pkgs. **2.99**

TROPICANA
Fruit Punch or Lemonade
64-oz. cont. **.84**

STUFFED W/CRAB OR SHRIMP
Eat All Flounder
8-oz. pkg. **1.29**

TYSON
Chicken Pot Pie
9 1/2-oz. pkg. **.99**

HARVEST PRIDE
Italian Bread
16-oz. loaf **.74**

TREE RIPE PLUMS, NECTARINES OR
Tree Ripe Peaches
1-lb. **1.29**

FROZEN CUT OR FRENCH
ShopRite Green Beans
20-oz. pkg. **.79**

CRUNCHY FILLETS, STICKS OR BATTER
Gorton's Fish Fillets
1-lb. 6-oz. pkg. **1.69**

ASSORTED VARIETIES
Harvest Pride Rye Bread
16-oz. loaf **.74**

VITAMIN C 100 SIZE JUICY
Florida Oranges
10 **.99**

SAUSAGE OR CHEESE
Totino's Party Pizza
9.85/10.6-oz. pkg. **1.09**

ASSORTED VARIETIES
Good Humor Ice Cream
1-pt. cont. **.99**

DELICIOUS
Mr. Turkey Kielbasa
1-lb. **1.19**

IMP. FROM SOUTH AMERICA LARGE 15 SIZE
Sweet Cantaloupes
ea. **.99**

We Save You Money In Every Aisle!

WHY PAY MORE?
Farm Flavor Apple Juice
1-gal. bot. **.99**

U.S. GRADE 'A' NEW ENGLAND
Fresh Flounder Fillet
1-lb. **5.99**

U.S.D.A CHOICE BEEF LOIN
Tailless Shell Steak
SAVE AN ADDITIONAL 1.00 WITH PRICE PLUS®
ANY SIZE PKG. **3.99**

VITAMINS 'A' & 'C' LARGE 14 SIZE
California Broccoli
each **.99**

HEAVY DUTY
ShopRite Liquid Detergent
1-gal. **2.99**

STORE SLICED
Fresh Shark Steak
1-lb. **3.99**

THIN CUT FROM LEG
Veal Scallopini
1-lb. **6.99**

LOW IN SODIUM
Golden Ripe Bananas
lbs. **2.99**

WITH EXTRA FIBER APPLE OR APPLE RASPBERRY
Gerber Juice & More
1-qt. 1-lb. 14-oz. can **1.59 .99**

FROZEN OR THAWED, 41-50 PER LB.
Medium White Shrimp lb. **4.99**

CENTER CUT
Boneless Pork Chops lb. **4.49**

VITAMIN C 48 SIZE WHITE
Florida Grapefruit 4 for **.99**

BEST OF THE BEST
Apple Pancakes 5.8 to 7-oz. pkg. **1.19**

U.S. GRADE 'A' FRESH
Mahi Mahi Fillet lb. **4.99**

6 WINGS, 6 DRUMS & 6 THIGHS, FRESH
Perdue 18-Pc. Fryers lb. **.99**

VITAMIN C
Firm Ripe Tomatoes 26-oz. pkg. **1.89**

VEGETABLE OR CORN
Wesson Oil 1-gal. bot. **3.99**

U.S. GRADE 'A' ATLANTIC
Fresh Mackerel lb. **1.99**

FOR ROASTING
Fresh Pork Cali lb. **1.19**

VITAMINS 'A' & 'C' CALIF.
Tender Asparagus lb. **1.69**

ASSORTED VARIETIES
Reward Dog Food 5-oz. cans **1.00**

FROZEN OR THAWED, IMITATION W/ SNOW CRABMEAT
Seafood Chunks or Stix 12-oz. pkg. **1.99**

FRESH AMERICAN, BLADE CUT
Shoulder Lamb Chops lb. **2.29**

VITAMINS 'A' & 'C' CALIF.
Broccoli Rabe lb. **.99**

ASST. VAR. FROZEN
Best of the Best Entrees 8-1/2-oz. pkg. **2.99**

MEAT OR BEEF
Oscar Mayer Bologna 1-lb. pkg. **1.99**

CHEF'S EXPRESS FRIED RICE OR
Vegetable Lo Mein 9-oz. pkg. **.99**

IN FRESH BAKE SHOPPE
Large Italian Bread 16-oz. loaf **.59**

Prices effective in New Jersey, North of Trenton (ex. Montague, N.J.) including Kingston and E. Windsor, N.J. & Rockland & Richmond Counties, N.Y. In order to assure a sufficient supply of sale items for all our customers, we must reserve the right to limit purchases to 4 of any sale items, except where otherwise noted. Not responsible for typographical errors. None sold to other retailers or wholesalers. Artwork does not necessarily represent items on sale. It is for display purposes only. Sunday sales subject to local blue laws. Copyright WAKEFERN FOOD CORPORATION, 1991. Effective Sun., Feb. 24 thru Sat., Mar. 2, 1991.